

For Research Use Only

CoraLite® Plus 488-conjugated AMZ2 Polyclonal antibody

Catalog Number:CL488-16664



Basic Information

Catalog Number:

CL488-16664

Size:

1000 ug/ml

Source:

Rabbit

Isotype:

IgG

Immunogen Catalog Number:

AG10141

GenBank Accession Number:

BC056271

GeneID (NCBI):

51321

UNIPROT ID:

Q86W34

Full Name:

archaelysin family metallopeptidase

2

Calculated MW:

360 aa, 41 kDa

Observed MW:

41 kDa

Purification Method:

Antigen affinity purification

Recommended Dilutions:

IF/ICC 1:50-1:500

Excitation/Emission maxima
wavelengths:

493 nm / 522 nm

Applications

Tested Applications:

IF/ICC

Species Specificity:

human, mouse, rat

Positive Controls:

IF/ICC : HepG2 cells,

Background Information

AMZ2 (archaelysin family metallopeptidase 2) is a zinc metalloprotease. Its calculated molecular weight and observed molecular weight are both 41kDa.

Storage

Storage:

Store at -20°C. Avoid exposure to light. Stable for one year after shipment.

Storage Buffer:

PBS with 50% Glycerol, 0.05% Proclin300, 0.5% BSA, pH 7.3.

Aliquoting is unnecessary for -20°C storage

For technical support and original validation data for this product please contact:

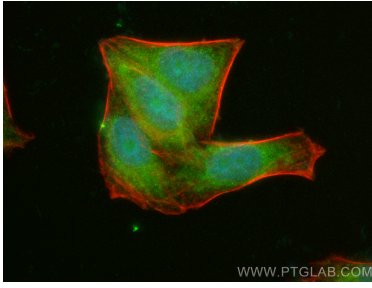
T: 4006900926

E: Proteintech-CN@ptglab.com

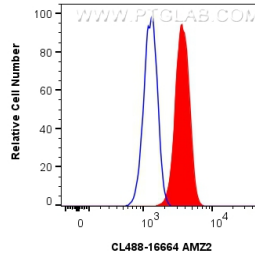
W: ptgcn.com

This product is exclusively available under Proteintech Group brand and is not available to purchase from any other manufacturer.

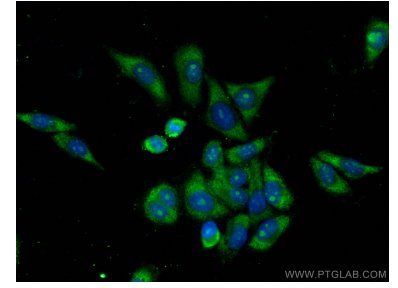
Selected Validation Data



Immunofluorescent analysis of (4% PFA) fixed HepG2 cells using CoraLite® Plus 488 AMZ2 antibody (CL488-16664) at dilution of 1:200, CL594-Phalloidin (red).



1x10⁶ HepG2 cells were intracellularly stained with 0.4 ug CoraLite® Plus 488-conjugated AMZ2 Polyclonal antibody (CL488-16664)(red), or 0.4 ug CoraLite® Plus 488-conjugated Rabbit IgG control Rabbit PolyAb (CL488-30000) (blue). Cells were fixed and permeabilized with Transcription Factor Staining Buffer Kit (PF00011).



Immunofluorescent analysis of (-20°C Ethanol) fixed HepG2 cells using CoraLite® Plus 488 AMZ2 antibody (CL488-16664) at dilution of 1:200.