

For Research Use Only

# CoraLite® Plus 488-conjugated GFAP Polyclonal antibody

Catalog Number: CL488-16825

Featured Product

6 Publications



## Basic Information

Catalog Number:

CL488-16825

Concentration:

1000 µg/ml

Source:

Rabbit

Isotype:

IgG

Immunogen Catalog Number:

AG10423

GenBank Accession Number:

BC013596

GeneID (NCBI):

2670

UNIPROT ID:

P14136

Full Name:

glial fibrillary acidic protein

Calculated MW:

432 aa, 50 kDa

Observed MW:

45-50 kDa

Purification Method:

Antigen affinity purification

Recommended Dilutions:

IF-P: 1:50-1:500

Excitation/Emission maxima wavelengths:

493 nm / 522 nm

## Applications

Tested Applications:

IF-P

Cited Applications:

IF

Species Specificity:

human, mouse, rat

Cited Species:

mouse, rat

Positive Controls:

IF-P: rat brain tissue, mouse brain tissue

## Background Information

GFAP (Glial fibrillary acidic protein), an intermediate-filament (IF) protein, is specifically expressed in cells of astroglial lineage and is widely used to mark astroglia in the brain. It is also used as a marker for intracranial and intraspinal tumors arising from astrocytes.

## Notable Publications

Author	Pubmed ID	Journal	Application
Yue Wan	36598105	Glia	IF
Ling Chen	40152573	J Integr Neurosci	IF
Yang Yang	39972331	J Nanobiotechnology	IF

## Storage

Storage:

Store at -20°C. Avoid exposure to light. Stable for one year after shipment.

Storage Buffer:

PBS with 50% glycerol, 0.05% Proclin300, 0.5% BSA, pH7.3

Aliquoting is unnecessary for -20°C storage

For technical support and original validation data for this product please contact:

T: 4006900926

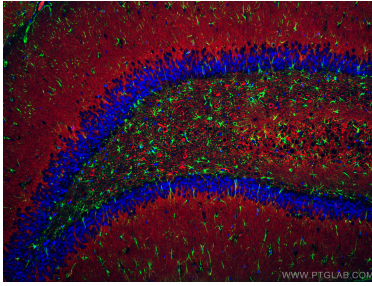
E: [Proteintech-CN@ptglab.com](mailto:Proteintech-CN@ptglab.com)

W: [ptgcn.com](http://ptgcn.com)

This product is exclusively available under Proteintech Group brand and is not available to purchase from any other manufacturer.

---

## Selected Validation Data



Immunofluorescent analysis of (4% PFA) fixed rat brain tissue using CoraLite® Plus 488 GFAP antibody (CL488-16825) at dilution of 1:200, CoraLite®594 MAP2 antibody (CL594-17490, red), DAPI (blue).