

For Research Use Only



CoraLite® Plus 488-conjugated Cytokeratin 1-specific Polyclonal antibody

Catalog Number: **CL488-16848**

Basic Information

Catalog Number: CL488-16848	GenBank Accession Number: NM_006121	Purification Method: Antigen affinity purification
Size: 1000 µg/ml	GeneID (NCBI): 3848	Recommended Dilutions: IF 1:50-1:500
Source: Rabbit	UNIPROT ID: P04264	Excitation/Emission maxima wavelengths: 493 nm / 522 nm
Isotype: IgG	Full Name: keratin 1	
	Calculated MW: 66 kDa	
	Observed MW: 67 kDa	

Applications

Tested Applications: IF/ICC	Positive Controls: IF : A431 cells,
Species Specificity: human, mouse, rat	

Background Information

Keratins are a large family of proteins that form the intermediate filament cytoskeleton of epithelial cells, which are classified into two major sequence types. Type I keratins are a group of acidic intermediate filament proteins, including K9-K23, and the hair keratins Ha1-Ha8. Type II keratins are the basic or neutral counterparts to the acidic type I keratins, including K1-K8, and the hair keratins, Hb1-Hb6. Keratin-1 is type II keratin. It is a specific marker for terminal differentiation in mammalian epidermis. It is specifically expressed in the spinous and granular layers of the epidermis with family member KRT10 and mutations in these genes have been associated with bullous congenital ichthyosiform erythroderma. This antibody is specifically against keratin I.

Storage

Storage:
Store at -20°C. Avoid exposure to light. Stable for one year after shipment.
Storage Buffer:
PBS with 50% Glycerol, 0.05% Proclin300, 0.5% BSA, pH 7.3.
Aliquoting is unnecessary for -20°C storage

For technical support and original validation data for this product please contact:

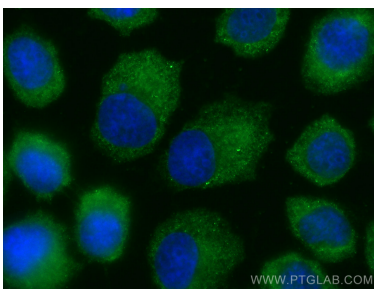
T: 4006900926

E: Proteintech-CN@ptglab.com

W: ptgcn.com

This product is exclusively available under Proteintech Group brand and is not available to purchase from any other manufacturer.

Selected Validation Data



Immunofluorescent analysis of (-20°C Ethanol)
fixed A431 cells using Coralite® Plus 488
Cytokeratin 1-specific antibody (CL488-16848) at
dilution of 1:200.