

For Research Use Only

CoraLite® Plus 488-conjugated CD3 Polyclonal antibody



Catalog Number: CL488-17617

Featured Product

Basic Information

Catalog Number:

CL488-17617

Size:

1000 µg/ml

Source:

Rabbit

Isotype:

IgG

Immunogen Catalog Number:

AG11797

GenBank Accession Number:

BC049847

GeneID (NCBI):

916

ENSEMBL Gene ID:

ENSG00000198851

UNIPROT ID:

P07766

Full Name:

CD3e molecule, epsilon (CD3-TCR complex)

Calculated MW:

207 aa, 23 kDa

Observed MW:

23-25 kDa

Purification Method:

Antigen affinity purification

Recommended Dilutions:

IF 1:50-1:500

Excitation/Emission maxima wavelengths:

493 nm / 522 nm

Applications

Tested Applications:

IF-P

Species Specificity:

human, pig, mouse, rat

Positive Controls:

IF : mouse spleen tissue,

Background Information

CD3 is a complex of proteins that directly associates with the T cell receptor (TCR). The TCR/CD3 complex of T-lymphocytes consists of either a TCR alpha/beta or TCR gamma/delta heterodimer coexpressed at the cell surface with the invariant subunits of CD3 labeled gamma, delta, epsilon, zeta, and eta. The TCR recognizes antigens bound to major histocompatibility complex (MHC) molecules. TCR-mediated peptide-MHC recognition is transmitted to the CD3 complex, leading to the intracellular signal transduction. CD3 is considered to be a pan-T cell marker for detection of normal and neoplastic T cells. This anti-CD3 is a polyclonal antibody directed against the epsilon chain of human CD3 molecule.

Storage

Storage:

Store at -20°C. Avoid exposure to light. Stable for one year after shipment.

Storage Buffer:

PBS with 50% Glycerol, 0.05% Proclin300, 0.5% BSA, pH 7.3.

Aliquoting is unnecessary for -20°C storage

For technical support and original validation data for this product please contact:

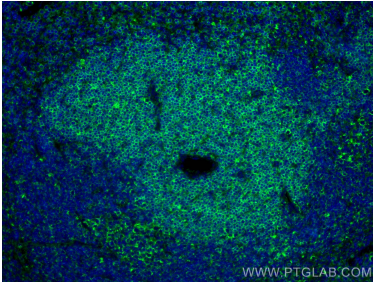
T: 4006900926

E: Proteintech-CN@ptglab.com

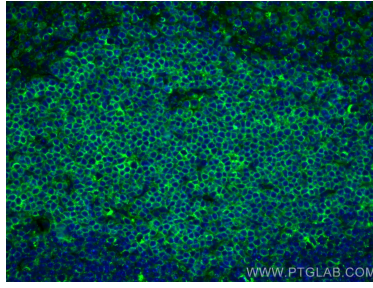
W: ptgcn.com

This product is exclusively available under Proteintech Group brand and is not available to purchase from any other manufacturer.

Selected Validation Data



Immunofluorescent analysis of (4% PFA) fixed mouse spleen tissue using CoraLite® Plus 488 CD3 antibody (CL488-17617) at dilution of 1:200.



Immunofluorescent analysis of (4% PFA) fixed mouse spleen tissue using CoraLite® Plus 488 CD3 antibody (CL488-17617) at dilution of 1:200.