

For Research Use Only

CoraLite® Plus 488-conjugated Podocalyxin Polyclonal antibody



Catalog Number:CL488-18150

Featured Product

Basic Information

Catalog Number:

CL488-18150

Size:

1000 µg/ml

Source:

Rabbit

Isotype:

IgG

Immunogen Catalog Number:

AG12844

GenBank Accession Number:

BC093730

GeneID (NCBI):

5420

UNIPROT ID:

O00592

Full Name:

podocalyxin-like

Calculated MW:

526 aa, 55 kDa

Observed MW:

60-70 kDa

Purification Method:

Antigen affinity purification

Recommended Dilutions:

IF 1:50-1:500

Excitation/Emission maxima wavelengths:

493 nm / 522 nm

Applications

Tested Applications:

FC (Intra), IF-P

Species Specificity:

human

Positive Controls:

IF : human kidney tissue,

Background Information

Podocalyxin, also known as podocalyxin-like protein 1 (PODXL or PCLP1), is a transmembrane glycoprotein belonging to the CD34 family of sialomucins. Podocalyxin was originally identified as the major sialoprotein on podocytes of the kidney glomerulus, but was later found to be expressed on vascular endothelial cells and early hematopoietic progenitors. It involved in the regulation of both adhesion and cell morphology. In addition, podocalyxin is highly expressed in embryonic stem cells and aberrant expression of podocalyxin has been implicated in a wide range of cancers. Podocalyxin is a protein with a peptide bone of 55.5 kDa that undergoes a post - translational glycosylation, the different molecular mass of podocalyxin indicates the extent and variability of glycosylation patterns (PMID: 17092254).

Storage

Storage:

Store at -20°C. Avoid exposure to light.

Storage Buffer:

PBS with 50% Glycerol, 0.05% Proclin300, 0.5% BSA, pH 7.3.

Aliquoting is unnecessary for -20°C storage

For technical support and original validation data for this product please contact:

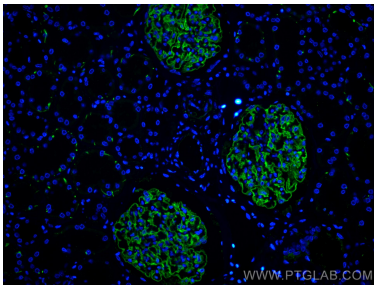
T: 4006900926

E: Proteintech-CN@ptglab.com

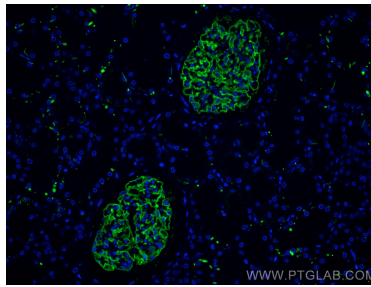
W: ptgcn.com

This product is exclusively available under Proteintech Group brand and is not available to purchase from any other manufacturer.

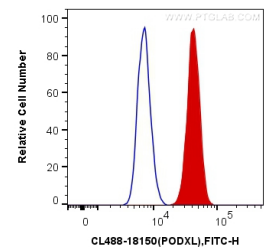
Selected Validation Data



Immunofluorescent analysis of (4% PFA) fixed human kidney tissue using CoraLite® Plus 488 Podocalyxin antibody (CL488-18150) at dilution of 1:200.



Immunofluorescent analysis of (4% PFA) fixed human kidney tissue using CoraLite® Plus 488 Podocalyxin antibody (CL488-18150) at dilution of 1:200.



1X10⁶ HeLa cells were intracellularly stained with 0.4 ug CoraLite® Plus 488 Anti-Human Podocalyxin (CL488-18150) (red), or 0.4 ug Control Antibody. Cells were fixed with 4% PFA and permeabilized with Flow Cytometry Perm Buffer (PF00011-C).