

For Research Use Only

# CoraLite® Plus 488-conjugated ATP6V0D1 Polyclonal antibody



Catalog Number:CL488-18274

## Basic Information

Catalog Number:

CL488-18274

Size:

1000 µg/ml

Source:

Rabbit

Isotype:

IgG

Immunogen Catalog Number:

AG13002

GenBank Accession Number:

BC008861

GeneID (NCBI):

9114

UNIPROT ID:

P61421

Full Name:

ATPase, H<sup>+</sup> transporting, lysosomal

38kDa, VO subunit d1

Calculated MW:

351 aa, 40 kDa

Observed MW:

37-41 kDa

Purification Method:

Antigen affinity purification

Recommended Dilutions:

IF 1:50-1:500

Excitation/Emission maxima  
wavelengths:

493 nm / 522 nm

## Applications

Tested Applications:

IF/ICC

Species Specificity:

human, mouse, rat

Positive Controls:

IF : HeLa cells,

## Background Information

ATP6V0D1(V-type proton ATPase subunit d 1) is also named as ATP6D, VPATPD and belongs to the V-ATPase V0D/AC39 subunit family.It is responsible for acidifying a variety of intracellular compartments in eukaryotic cells, thus providing most of the energy required for transport processes in the vacuolar system.

## Storage

Storage:

Store at -20°C. Avoid exposure to light. Stable for one year after shipment.

Storage Buffer:

PBS with 50% Glycerol, 0.05% Proclin300, 0.5% BSA, pH 7.3.

Aliquoting is unnecessary for -20°C storage

For technical support and original validation data for this product please contact:

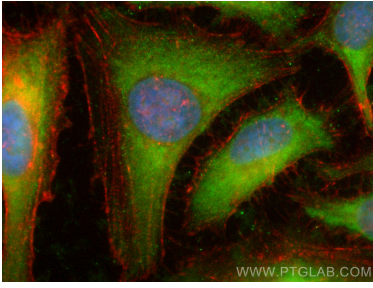
T: 4006900926

E: Proteintech-CN@ptglab.com

W: ptgcn.com

This product is exclusively available under Proteintech Group brand and is not available to purchase from any other manufacturer.

## Selected Validation Data



Immunofluorescent analysis of (-20°C Ethanol) fixed HeLa cells using CoraLite® Plus 488 ATP6V0D1 antibody (CL488-18274) at dilution of 1:200, CL594-Phalloidin (red).