

For Research Use Only

CoraLite® Plus 488-conjugated BAG1 Polyclonal antibody



Catalog Number: CL488-19064

Featured Product

Basic Information

Catalog Number:

CL488-19064

Size:

1000 µg/ml

Source:

Rabbit

Isotype:

IgG

Immunogen Catalog Number:

AG13555

GenBank Accession Number:

BC014774

GeneID (NCBI):

573

UNIPROT ID:

Q99933

Full Name:

BCL2-associated athanogene

Calculated MW:

39 kDa

Observed MW:

50-55 kDa, 30-33 kDa

Purification Method:

Antigen affinity purification

Recommended Dilutions:

IF 1:50-1:500

Excitation/Emission maxima
wavelengths:

493 nm / 522 nm

Applications

Tested Applications:

IF/ICC

Species Specificity:

human, mouse

Positive Controls:

IF : HeLa cells,

Background Information

BAG1 have been identified that modulate gene transcription through poorly defined mechanisms. Four isoforms of the BAG1 protein (BAG1S, BAG1, BAG1M and BAG1L) can be produced from a common mRNA by use of alternative translation initiation sites, including a non-canonical CTG codon in one instance. The longest, BAG1L (Mr ~50K), contains a nuclear localization signal (NLS) and resides in the nucleus, whereas BAG1M (Mr ~46K) has an incomplete NLS and distributes mainly in cytosol, unless dragged into the nucleus through interactions with other. Distribution of BAG1S(p33) is not clear yet. This antibody can recognize all the isoforms of BAG1.

Storage

Storage:

Store at -20°C. Avoid exposure to light. Stable for one year after shipment.

Storage Buffer:

PBS with 50% Glycerol, 0.05% Proclin300, 0.5% BSA, pH 7.3.

Aliquoting is unnecessary for -20°C storage

For technical support and original validation data for this product please contact:

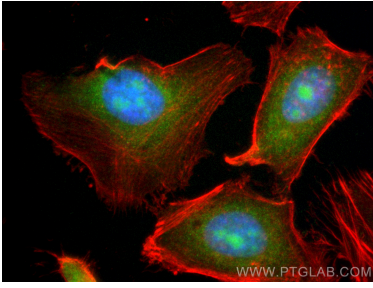
T: 4006900926

E: Proteintech-CN@ptglab.com

W: ptgcn.com

This product is exclusively available under Proteintech Group brand and is not available to purchase from any other manufacturer.

Selected Validation Data



Immunofluorescent analysis of (4% PFA) fixed HeLa cells using CoraLite® Plus 488 BAG1 antibody (CL488-19064) at dilution of 1:200, CL594-Phalloidin (red).