

For Research Use Only

CoraLite® Plus 488-conjugated RAP1GAP Polyclonal antibody



Catalog Number: **CL488-19174**

Basic Information

Catalog Number:

CL488-19174

Size:

1000 µg/ml

Source:

Rabbit

Isotype:

IgG

Immunogen Catalog Number:

AG5576

GenBank Accession Number:

BC054490

GeneID (NCBI):

5909

UNIPROT ID:

P47736

Full Name:

RAP1 GTPase activating protein

Calculated MW:

73 kDa

Observed MW:

85-95 kDa

Purification Method:

Antigen affinity purification

Recommended Dilutions:

IF/ICC 1:50-1:500

Excitation/Emission maxima
wavelengths:

493 nm / 522 nm

Applications

Tested Applications:

IF/ICC, FC (Intra)

Species Specificity:

human, mouse, rat

Positive Controls:

IF/ICC : HeLa cells,

Background Information

Storage

Storage:

Store at -20°C. Avoid exposure to light. Stable for one year after shipment.

Storage Buffer:

PBS with 50% Glycerol, 0.05% Proclin300, 0.5% BSA, pH 7.3.

Aliquoting is unnecessary for -20°C storage

For technical support and original validation data for this product please contact:

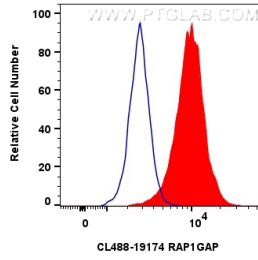
T: 4006900926

E: Proteintech-CN@ptglab.com

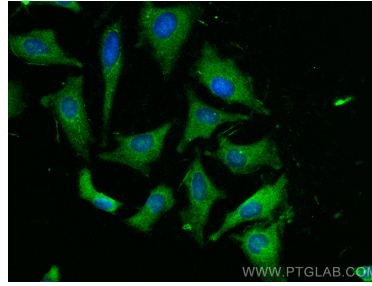
W: ptgcn.com

This product is exclusively available under Proteintech Group brand and is not available to purchase from any other manufacturer.

Selected Validation Data



1×10^6 HeLa cells were intracellularly stained with 0.8 μ g CoraLite® Plus 488 Rap1gap Polyclonal Antibody (CL488-19174)(red), or 0.8 μ g CoraLite® Plus 488-conjugated Rabbit IgG control Rabbit PolyAb (CL488-30000) (blue). Cells were fixed with 4% PFA and permeabilized with Flow Cytometry Perm Buffer (PF00011-C).



Immunofluorescent analysis of (-20°C Ethanol) fixed HeLa cells using CoraLite® Plus 488 RAP1GAP antibody (CL488-19174) at dilution of 1:200.