

For Research Use Only

# CoraLite® Plus 488-conjugated KCC2/SLC12A5-Specific Polyclonal antibody



Catalog Number: **CL488-19565**

## Basic Information

Catalog Number:

CL488-19565

Size:

1000 µg/ml

Source:

Rabbit

Isotype:

IgG

GenBank Accession Number:

NM\_020708

GeneID (NCBI):

57468

UNIPROT ID:

Q9H2X9

Full Name:

solute carrier family 12 (potassium-chloride transporter), member 5

Calculated MW:

126 kDa

Observed MW:

130-150 kDa

Purification Method:

Antigen affinity purification

Recommended Dilutions:

IF-P 1:50-1:500

Excitation/Emission maxima wavelengths:

493 nm / 522 nm

## Applications

Tested Applications:

IF-P

Species Specificity:

human, mouse, rat

Positive Controls:

IF-P: mouse cerebellum tissue,

## Background Information

KCC2, encoded by SLC12A5, is a neuron-specific K<sup>+</sup>-Cl<sup>-</sup> cotransporter that is essential for Cl<sup>-</sup> homeostasis and inhibitory synaptic transmission in brain. KCC2 is expressed at high levels in neurons throughout the nervous system. KCC2 deletion caused animal death. Alterations of KCC2 have been linked to neuropathic pain, temporal lobe epilepsy, and other diseases. This antibody can detect 130-150 kDa monomer and ~250 kDa dimer of KCC2 in brain lysate. (PMID: 23401525)

## Storage

Storage:

Store at -20°C. Avoid exposure to light. Stable for one year after shipment.

Storage Buffer:

PBS with 50% Glycerol, 0.05% Proclin300, 0.5% BSA, pH 7.3.

Aliquoting is unnecessary for -20°C storage

For technical support and original validation data for this product please contact:

T: 4006900926

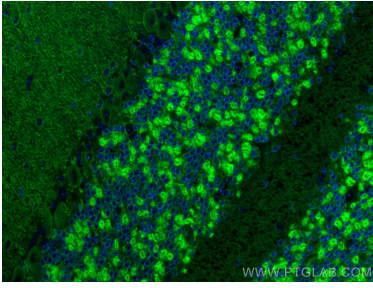
E: [Proteintech-CN@ptglab.com](mailto:Proteintech-CN@ptglab.com)

W: [ptgcn.com](http://ptgcn.com)

This product is exclusively available under Proteintech Group brand and is not available to purchase from any other manufacturer.

---

## Selected Validation Data



Immunofluorescent analysis of (4% PFA) fixed mouse cerebellum tissue using CoraLite® Plus 488 KCC2/SLC12A5-Specific antibody (CL488-19565) at dilution of 1:200.