

For Research Use Only

CoraLite® Plus 488-conjugated CUEDC2 Polyclonal antibody



Catalog Number: **CL488-20123**

Basic Information

Catalog Number: CL488-20123	GenBank Accession Number: BC000262	Purification Method: Antigen affinity purification
Size: 1000 µg/ml	GeneID (NCBI): 79004	Recommended Dilutions: IF/ICC 1:50-1:500
Source: Rabbit	UNIPROT ID: Q9H467	Excitation/Emission maxima wavelengths: 493 nm / 522 nm
Isotype: IgG	Full Name: CUE domain containing 2	
Immunogen Catalog Number: AG13847	Calculated MW: 287 aa, 32 kDa	
	Observed MW: 32 kDa	

Applications

Tested Applications: IF/ICC, FC (Intra)	Positive Controls: IF/ICC : HeLa cells,
Species Specificity: human, mouse	

Background Information

CUE domain-containing 2 (CUEDC2) is a ubiquitin-binding motif-containing protein involved in the regulation of the cell cycle, inflammation, and tumorigenesis. It is ubiquitously expressed in human tissues and organs, not only highly expressed in the normal brain, heart and testis, but also some kinds of cancers, such as breast, ovarian and kidney cancers. CUEDC2 could act as an adaptor protein to target I κ B kinase (IKK) for dephosphorylation and inactivation by recruiting protein phosphatase (PP1), and thus repressed activation of the transcription factor NF- κ B. Moreover, CUEDC2, is a key factor in endocrine resistance in breast cancer.

Storage

Storage:
Store at -20°C. Avoid exposure to light. Stable for one year after shipment.
Storage Buffer:
PBS with 50% Glycerol, 0.05% Proclin300, 0.5% BSA, pH 7.3.
Aliquoting is unnecessary for -20°C storage

For technical support and original validation data for this product please contact:

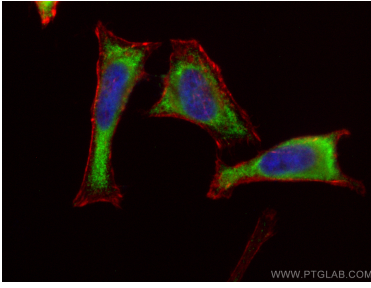
T: 4006900926

E: Proteintech-CN@ptglab.com

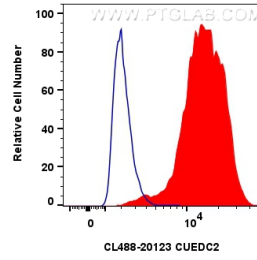
W: ptgcn.com

This product is exclusively available under Proteintech Group brand and is not available to purchase from any other manufacturer.

Selected Validation Data



Immunofluorescent analysis of (-20°C Ethanol) fixed HeLa cells using CoraLite® Plus 488 CUEDC2 antibody (CL488-20123) at dilution of 1:200, CL594-Phalloidin (red).



1x10⁶ HeLa cells were intracellularly stained with 0.8 ug CoraLite® Plus 488-conjugated CUEDC2 Polyclonal antibody (CL488-20123)(red), or 0.8 ug CoraLite® Plus 488-conjugated Rabbit IgG control Rabbit PolyAb (CL488-30000) (blue). Cells were fixed with 4% PFA and permeabilized with Flow Cytometry Perm Buffer (PF00011-C).