

For Research Use Only

# CoraLite® Plus 488-conjugated CHCHD4 Polyclonal antibody



Catalog Number: CL488-21090

Featured Product

## Basic Information

Catalog Number:

CL488-21090

Size:

1000 µg/ml

Source:

Rabbit

Isotype:

IgG

Immunogen Catalog Number:

AG15339

GenBank Accession Number:

BC033775

GeneID (NCBI):

131474

UNIPROT ID:

Q8N4Q1

Full Name:

coiled-coil-helix-coiled-coil-helix  
domain containing 4

Calculated MW:

142 aa, 16 kDa

Observed MW:

22 kDa

Purification Method:

Antigen affinity purification

Recommended Dilutions:

IF 1:50-1:500

Excitation/Emission maxima  
wavelengths:

493 nm / 522 nm

## Applications

Tested Applications:

IF/ICC

Species Specificity:

human, mouse, rat

Positive Controls:

IF : HeLa cells, A431 cells

## Background Information

CHCHD4, a component of human mitochondria, belongs to a protein family. It functions as chaperone and catalyzes the formation of disulfide bonds in substrate proteins, such as COX17. It is required for the import and folding of small cysteine-containing proteins (small Tim) in the mitochondrial intermembrane space (IMS).

## Storage

Storage:

Store at -20°C. Avoid exposure to light. Stable for one year after shipment.

Storage Buffer:

PBS with 50% Glycerol, 0.05% Proclin300, 0.5% BSA, pH 7.3.

Aliquoting is unnecessary for -20°C storage

For technical support and original validation data for this product please contact:

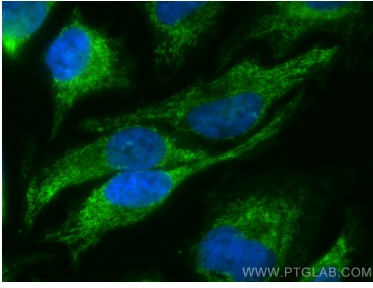
T: 4006900926

E: [Proteintech-CN@ptglab.com](mailto:Proteintech-CN@ptglab.com)

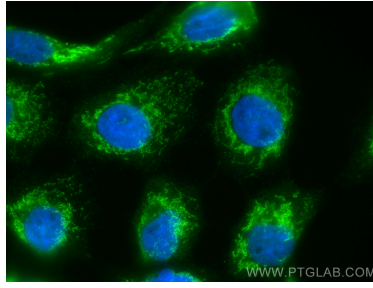
W: [ptgcn.com](http://ptgcn.com)

This product is exclusively available under Proteintech Group brand and is not available to purchase from any other manufacturer.

## Selected Validation Data



Immunofluorescent analysis of (4% PFA) fixed HeLa cells using CoraLite® Plus 488 CHCHD4 antibody (CL488-21090) at dilution of 1:200.



Immunofluorescent analysis of (4% PFA) fixed A431 cells using CoraLite® Plus 488 CHCHD4 antibody (CL488-21090) at dilution of 1:200.