

For Research Use Only

# CoraLite® Plus 488-conjugated SH3BGR Polyclonal antibody



Catalog Number: CL488-21161

Featured Product

## Basic Information

Catalog Number:

CL488-21161

Size:

1000 µg/ml

Source:

Rabbit

Isotype:

IgG

Immunogen Catalog Number:

AG14739

GenBank Accession Number:

BC006371

GeneID (NCBI):

6450

UNIPROT ID:

P55822

Full Name:

SH3 domain binding glutamic acid-rich protein

Calculated MW:

239 aa, 26 kDa

Observed MW:

26-30 kDa

Purification Method:

Antigen affinity purification

Recommended Dilutions:

IF/ICC 1:50-1:500

Excitation/Emission maxima wavelengths:

493 nm / 522 nm

## Applications

Tested Applications:

IF/ICC, FC (Intra)

Species Specificity:

human, mouse

Positive Controls:

IF/ICC : HeLa cells,

## Background Information

### Storage

Storage:

Store at -20°C. Avoid exposure to light. Stable for one year after shipment.

Storage Buffer:

PBS with 50% Glycerol, 0.05% Proclin300, 0.5% BSA, pH 7.3.

Aliquoting is unnecessary for -20°C storage

For technical support and original validation data for this product please contact:

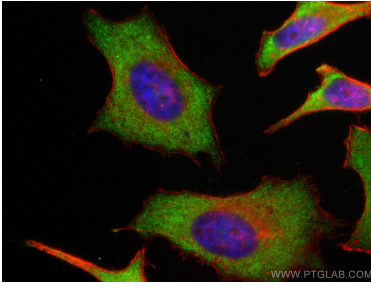
T: 4006900926

E: [Proteintech-CN@ptglab.com](mailto:Proteintech-CN@ptglab.com)

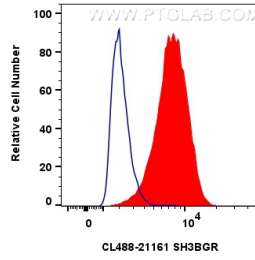
W: [ptgcn.com](http://ptgcn.com)

This product is exclusively available under Proteintech Group brand and is not available to purchase from any other manufacturer.

## Selected Validation Data



Immunofluorescent analysis of (-20°C Ethanol) fixed HeLa cells using CoraLite® Plus 488 SH3BGR antibody (CL488-21161) at dilution of 1:200, CL594-Phalloidin (red).



1x10<sup>6</sup> HeLa cells were intracellularly stained with 0.8 ug CoraLite® Plus 488-conjugated SH3BGR Polyclonal antibody (CL488-21161)(red), or 0.8 ug CoraLite® Plus 488-conjugated Rabbit IgG control Rabbit PolyAb (CL488-30000) (blue). Cells were fixed with 4% PFA and permeabilized with Flow Cytometry Perm Buffer (PF00011-C).