

For Research Use Only

# CoraLite® Plus 488-conjugated FOLR1 Polyclonal antibody



Catalog Number: CL488-23355

Featured Product

## Basic Information

Catalog Number:

CL488-23355

Size:

1000 µg/ml

Source:

Rabbit

Isotype:

IgG

Immunogen Catalog Number:

AG19959

GenBank Accession Number:

BC002947

GeneID (NCBI):

2348

UNIPROT ID:

P15328

Full Name:

folate receptor 1 (adult)

Calculated MW:

257 aa, 30 kDa

Observed MW:

38 kDa

Purification Method:

Antigen affinity purification

Excitation/Emission maxima  
wavelengths:

493 nm / 522 nm

## Applications

Tested Applications:

FC (Intra)

Species Specificity:

human

## Background Information

Folate receptor 1 (FOLR1), also known as folate receptor alpha or adult folate-binding protein (FBP), is a 38-kDa glycoprotein belonging to the folate receptor family (PMID:15094207; 23528302). The receptor binds to folate and reduced folic acid derivatives and mediates delivery of 5-methyltetrahydrofolate to the interior of cells. FOLR1 is a secreted protein that either anchors to membranes via a glycosyl-phosphatidylinositol linkage or exists in a soluble form. FOLR1 expression is often limited to the apical surfaces of epithelium in the lung, kidney and choroid plexus but is differentially overexpressed in a variety of solid tumors such as ovarian cancer, non-small cell lung cancer, breast cancer, kidney cancer and high-grade osteosarcoma (PMID: 23528302; 23357463).

## Storage

Storage:

Store at -20°C. Avoid exposure to light. Stable for one year after shipment.

Storage Buffer:

PBS with 50% Glycerol, 0.05% Proclin300, 0.5% BSA, pH 7.3.

Aliquoting is unnecessary for -20°C storage

For technical support and original validation data for this product please contact:

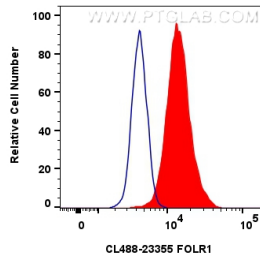
T: 4006900926

E: [Proteintech-CN@ptglab.com](mailto:Proteintech-CN@ptglab.com)

W: [ptgcn.com](http://ptgcn.com)

This product is exclusively available under Proteintech Group brand and is not available to purchase from any other manufacturer.

## Selected Validation Data



1x10<sup>6</sup> HeLa cells were intracellularly stained with 0.8 ug CoraLite® Plus 488 Anti-Human FOLR1 (CL488-23355)(red), or 0.8 ug CoraLite® Plus 488-conjugated Rabbit IgG control Rabbit PolyAb (CL488-30000) (blue). Cells were fixed with 4% PFA and permeabilized with Flow Cytometry Perm Buffer (PF00011-C).