

For Research Use Only

CoraLite® Plus 488-conjugated Sodium iodide symporter Polyclonal antibody



Catalog Number: **CL488-24324**

Basic Information

Catalog Number: CL488-24324	GenBank Accession Number: BC105047	Purification Method: Antigen affinity purification
Size: 1000 µg/ml	GeneID (NCBI): 6528	Excitation/Emission maxima wavelengths: 493 nm / 522 nm
Source: Rabbit	UNIPROT ID: Q92911	
Isotype: IgG	Full Name: solute carrier family 5 (sodium iodide symporter), member 5	
Immunogen Catalog Number: AG19504	Calculated MW: 643 aa, 69 kDa	
	Observed MW: 50-55 kDa, 75-100 kDa	

Applications

Tested Applications:
FC (Intra)

Species Specificity:
human, mouse, rat

Background Information

The sodium iodide symporter (Na⁺/I⁻ symporter, NIS), encoded by SLC5A5, is an integral plasma membrane glycoprotein that plays an important role in iodide uptake by thyroid cells. Expression of sodium iodide symporter has also been found in extra-thyroidal tissues, including gastric mucosa, lactating mammary gland and salivary glands. Increased expression of sodium iodide symporter has been found in thyroid tissue from patients with Graves' disease as well as papillary thyroid carcinomas. In addition, sodium iodide symporter was found to express in majority of breast cancer tissue but not in normal tissue. Sodium iodide symporter can be a promising diagnostic and therapeutic tool for thyroid cancer and breast cancer. This antibody recognizes the mature approximately 75-100 kDa protein and a partially glycosylated 50-55 kDa protein. (PMID: 12588808, 9525971)

Storage

Storage:
Store at -20°C. Avoid exposure to light. Stable for one year after shipment.

Storage Buffer:
PBS with 50% Glycerol, 0.05% Proclin300, 0.5% BSA, pH 7.3.

Aliquoting is unnecessary for -20°C storage

For technical support and original validation data for this product please contact:

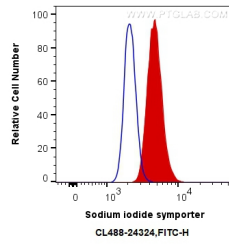
T: 4006900926

E: Proteintech-CN@ptglab.com

W: ptgcn.com

This product is exclusively available under Proteintech Group brand and is not available to purchase from any other manufacturer.

Selected Validation Data



1X10⁶ MCF-7 cells were intracellularly stained with 0.4 ug CoraLite® Plus 488 Anti-Human Sodium iodide symporter (CL488-24324) (red), or 0.4 ug Control Antibody. Cells were fixed with 4% PFA and permeabilized with Flow Cytometry Perm Buffer (PF00011-C).