

For Research Use Only

# CoraLite® Plus 488-conjugated INSIG2 Polyclonal antibody



Catalog Number: CL488-24766

Featured Product

## Basic Information

Catalog Number:

CL488-24766

Size:

1000 µg/ml

Source:

Rabbit

Isotype:

IgG

Immunogen Catalog Number:

AG14072

GenBank Accession Number:

BC022475

GeneID (NCBI):

51141

UNIPROT ID:

Q9Y5U4

Full Name:

INSIG 2

Calculated MW:

225 aa, 25 kDa

Observed MW:

30 kDa

Purification Method:

Antigen affinity purification

Recommended Dilutions:

IF 1:50-1:500

Excitation/Emission maxima  
wavelengths:

493 nm / 522 nm

## Applications

Tested Applications:

IF/ICC

Species Specificity:

human, mouse, rat

Positive Controls:

IF : HepG2 cells,

## Background Information

INSIG2 mediates feedback control of cholesterol synthesis by controlling SCAP and HMGCR. INSIG2 may bring HMGCR into ubiquitin-mediated proteasomal degradation. Insig2 protein are endoplasmic reticulum proteins that block the processing of sterol regulatory element binding proteins (SREBPs) by binding to SREBP cleavage-activating protein (SCAP), and thus prevent SCAP from escorting SREBPs to the Golgi. INSIG-2 may play an important role in therapy of hypercholesterolemia.

## Storage

Storage:

Store at -20°C. Avoid exposure to light. Stable for one year after shipment.

Storage Buffer:

PBS with 50% Glycerol, 0.05% Proclin300, 0.5% BSA, pH 7.3.

Aliquoting is unnecessary for -20°C storage

For technical support and original validation data for this product please contact:

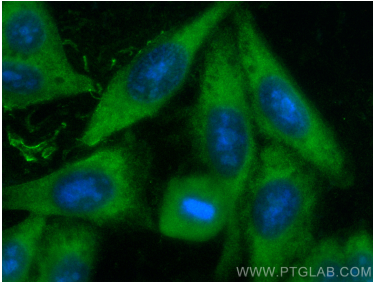
T: 4006900926

E: [Proteintech-CN@ptglab.com](mailto:Proteintech-CN@ptglab.com)

W: [ptgcn.com](http://ptgcn.com)

This product is exclusively available under Proteintech Group brand and is not available to purchase from any other manufacturer.

## Selected Validation Data



Immunofluorescent analysis of (-20°C Ethanol) fixed HepG2 cells using CoraLite® Plus 488 INSIG2 antibody (CL488-24766) at dilution of 1:200.