

For Research Use Only

CoraLite® Plus 488-conjugated GRAMD1B Polyclonal antibody



Catalog Number: CL488-24905

Basic Information

Catalog Number:

CL488-24905

Size:

1000 µg/ml

Source:

Rabbit

Isotype:

IgG

Immunogen Catalog Number:

AG20670

GenBank Accession Number:

BC107480

GeneID (NCBI):

57476

UNIPROT ID:

Q3KR37

Full Name:

GRAM domain containing 1B

Calculated MW:

738 aa, 85 kDa

Observed MW:

85 kDa

Purification Method:

Antigen affinity purification

Recommended Dilutions:

IF/ICC 1:50-1:500

Excitation/Emission maxima
wavelengths:

493 nm / 522 nm

Applications

Tested Applications:

IF/ICC, FC (Intra)

Species Specificity:

human, mouse

Positive Controls:

IF/ICC : A549 cells,

Background Information

GRAMD1B, also named as KIAA1201, contains a transmembrane region and two domains of known function; the GRAM domain and a VAS domain. It is predicted to localize in the nucleus, supported by several nuclear transport signals and nuclear associated motifs. This highly conserved gene is found in a variety of vertebrates and invertebrates, however, it is not found in bacteria or fungi. There're some isoforms with MW 50 kDa and 81-87 kDa. With phosphor modification, it's about 90-110 kDa in WB detection.

Storage

Storage:

Store at -20°C. Avoid exposure to light. Stable for one year after shipment.

Storage Buffer:

PBS with 50% Glycerol, 0.05% Proclin300, 0.5% BSA, pH 7.3.

Aliquoting is unnecessary for -20°C storage

For technical support and original validation data for this product please contact:

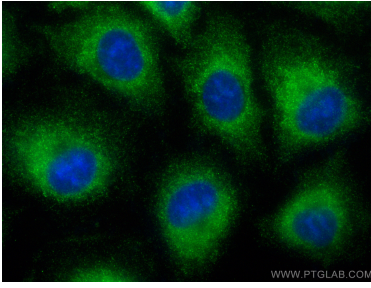
T: 4006900926

E: Proteintech-CN@ptglab.com

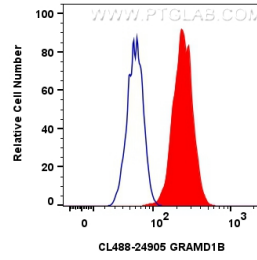
W: ptgcn.com

This product is exclusively available under Proteintech Group brand and is not available to purchase from any other manufacturer.

Selected Validation Data



Immunofluorescent analysis of (-20°C Methanol) fixed A549 cells using Coralite® Plus 488 GRAMD1B antibody (CL488-24905) at dilution of 1:200.



1x10⁶ A549 cells were intracellularly stained with 0.8 ug Coralite® Plus 488 Gramd1b Polyclonal Antibody (CL488-24905)(red), or 0.8 ug Coralite® Plus 488-conjugated Rabbit IgG control Rabbit PolyAb (CL488-30000) (blue). Cells were fixed with 4% PFA and permeabilized with Flow Cytometry Perm Buffer (PF00011-C).