

For Research Use Only

# CoraLite® Plus 488-conjugated GMAP-210 Polyclonal antibody



Catalog Number: CL488-26456

Featured Product

## Basic Information

Catalog Number:

CL488-26456

Size:

1000 µg/ml

Source:

Rabbit

Isotype:

IgG

Immunogen Catalog Number:

AG13867

GenBank Accession Number:

BC002656

GeneID (NCBI):

9321

UNIPROT ID:

Q15643

Full Name:

thyroid hormone receptor interactor

11

Calculated MW:

1979 aa, 228 kDa

Observed MW:

230 kDa

Purification Method:

Antigen affinity purification

Recommended Dilutions:

IF/ICC 1:50-1:500

Excitation/Emission maxima

wavelengths:

493 nm / 522 nm

## Applications

Tested Applications:

IF/ICC

Species Specificity:

human

Positive Controls:

IF/ICC : HeLa cells,

## Background Information

Golgi microtubule-associated protein 210 (GMAP-210), also referred to as CEV14, Trip11 or Trip230, is a peripheral Golgi protein that localizes to the cis-Golgi network. GMAP-210 is a 1,978 amino acid coiled-coil member of the golgin family of proteins. Microtubule ends bind to GMAP-210 which functions to link the cis-Golgi network to the minus ends of centrosome-nucleated microtubules. This interaction may be essential for the proper morphology and structural maintenance of the Golgi apparatus. GMAP-210 also associates with thyroid hormone receptor. Overexpression of GMAP-210 disrupts the micro-tubule network and causes a significant enlargement and fragmentation of the Golgi apparatus; it also blocks anterograde and retrograde transport between the ER and the Golgi apparatus.

## Storage

Storage:

Store at -20°C. Avoid exposure to light. Stable for one year after shipment.

Storage Buffer:

PBS with 50% Glycerol, 0.05% Proclin300, 0.5% BSA, pH 7.3.

Aliquoting is unnecessary for -20°C storage

For technical support and original validation data for this product please contact:

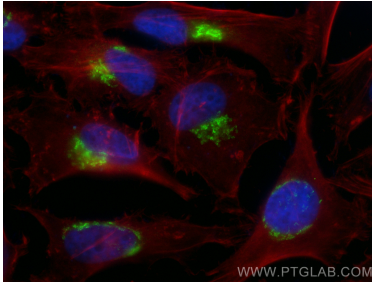
T: 4006900926

E: [Proteintech-CN@ptglab.com](mailto:Proteintech-CN@ptglab.com)

W: [ptgcn.com](http://ptgcn.com)

This product is exclusively available under Proteintech Group brand and is not available to purchase from any other manufacturer.

## Selected Validation Data



Immunofluorescent analysis of (4% PFA) fixed HeLa cells using CoraLite® Plus 488 GMAP-210 antibody (CL488-26456) at dilution of 1:200, CL594-Phalloidin (red).