

For Research Use Only

CoraLite® Plus 488-conjugated LIMD1 Polyclonal antibody

Catalog Number:CL488-28106



Basic Information

Catalog Number: CL488-28106	GenBank Accession Number: NM_014240	Purification Method: Antigen affinity purification
Size: 1000 ug/ml	GeneID (NCBI): 8994	Recommended Dilutions: IF/ICC 1:50-1:500
Source: Rabbit	UNIPROT ID: Q9UGP4	Excitation/Emission maxima wavelengths: 493 nm / 522 nm
Isotype: IgG	Full Name: LIM domains containing 1	
Immunogen Catalog Number: AG27974	Calculated MW: 72 aa	
	Observed MW: 72 kDa	

Applications

Tested Applications: IF/ICC	Positive Controls: IF/ICC : A431 cells,
Species Specificity: human	

Background Information

LIMD1 is a member of the Ajuba family of LIM domain-containing proteins, these kinds of proteins have been shown to play a role in intracellular signaling, transcriptional regulation and cellular differentiation, proliferation and migration (PMID:17174104). LIMD1 predominantly localizes to the cytoplasm especially in the E-cadherin cell-cell adhesive junction, yet also translocates to the nucleus when functions as an RB corepressor (PMID:19060205). And LIMD1 acts as a scaffolding protein to form a PHD-LIMD1-VHL axis, facilitating HIF1 α ubiquitination and degradation by the proteasome (PMID:22800800). LIMD1 specifically interacts with retinoblastoma protein (pRB), inhibits E2F-mediated transcription, and suppresses the expression of the majority of genes with E2F1-responsive elements. As a tumor suppressor, LIMD1 blocks tumor growth in vitro and in vivo, and is frequently down-regulated in human lung tumors (PMID:15542589), and it also be detected in normal and breast cancer tissues. LIMD1 protein exists several phosphorylation sites, which may affect its theoretical molecular weight when tested. Proteintech's 28106-1-AP antibody was generated by 133 amino acids, it could recognize the full-length protein in applications.

Storage

Storage:
Store at -20°C. Avoid exposure to light. Stable for one year after shipment.
Storage Buffer:
PBS with 50% Glycerol, 0.05% Proclin300, 0.5% BSA, pH 7.3.
Aliquoting is unnecessary for -20°C storage

For technical support and original validation data for this product please contact:

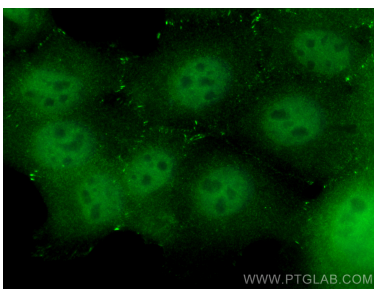
T: 4006900926

E: Proteintech-CN@ptglab.com

W: ptgcn.com

This product is exclusively available under Proteintech Group brand and is not available to purchase from any other manufacturer.

Selected Validation Data



Immunofluorescent analysis of (4% PFA) fixed A431 cells using CoraLite® Plus 488 LIMD1 antibody (CL488-28106) at dilution of 1:200.