

For Research Use Only

# CoraLite® Plus 488-conjugated WIPI2 Polyclonal antibody

Catalog Number: CL488-28820



## Basic Information

Catalog Number:

CL488-28820

Size:

1000 ug/ml

Source:

Rabbit

Isotype:

IgG

Immunogen Catalog Number:

AG30505

GenBank Accession Number:

BC004116

GeneID (NCBI):

26100

UNIPROT ID:

Q9Y4P8

Full Name:

WD repeat domain, phosphoinositide

interacting 2

Calculated MW:

49 kDa

Observed MW:

49 kDa

Purification Method:

Antigen affinity purification

Recommended Dilutions:

IF/ICC 1:50-1:500

Excitation/Emission maxima wavelengths:

493 nm / 522 nm

## Applications

Tested Applications:

IF/ICC

Species Specificity:

human, mouse

Positive Controls:

IF/ICC : HeLa cells,

## Background Information

WIPI2, the mammalian homologue of the yeast ATG18 gene, plays a key role in autophagy. It binds the omegasome, a phosphatidylinositol 3-phosphate (PI3P) rich domain of the endoplasmic reticulum from which the mature autophagosome develops. Western blotting detected a 49 kDa WIPI2 band. (PMID: 30968111, PMID: 30403914)

## Storage

Storage:

Store at -20°C. Avoid exposure to light. Stable for one year after shipment.

Storage Buffer:

PBS with 50% Glycerol, 0.05% Proclin300, 0.5% BSA, pH 7.3.

Aliquoting is unnecessary for -20°C storage

For technical support and original validation data for this product please contact:

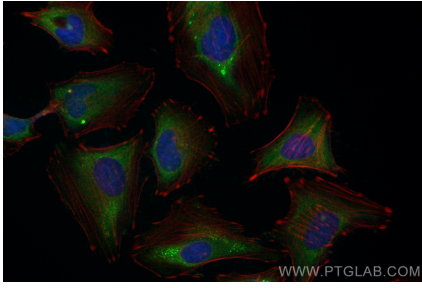
T: 4006900926

E: [Proteintech-CN@ptglab.com](mailto:Proteintech-CN@ptglab.com)

W: [ptgcn.com](http://ptgcn.com)

**This product is exclusively available under Proteintech Group brand and is not available to purchase from any other manufacturer.**

## Selected Validation Data



Immunofluorescent analysis of (-20°C Ethanol) fixed HeLa cells using CoraLite® Plus 488 WIPI2 antibody (CL488-28820) at dilution of 1:200.