

For Research Use Only

CoraLite® Plus 488-conjugated KDM4A Polyclonal antibody



Catalog Number: CL488-29977

Basic Information

Catalog Number: CL488-29977	GenBank Accession Number: BC002558	Purification Method: Antigen affinity purification
Size: 1000 µg/ml	GeneID (NCBI): 9682	Excitation/Emission maxima wavelengths: 493 nm / 522 nm
Source: Rabbit	UNIPROT ID: O75164	
Isotype: IgG	Full Name: lysine (K)-specific demethylase 4A	
Immunogen Catalog Number: AG31992	Calculated MW: 1064 aa, 121 kDa	
	Observed MW: 130-150 kDa	

Applications

Tested Applications:
FC (Intra)

Species Specificity:
Human, mouse

Background Information

KDM4A also named as JHDM3A, JMJD2, or KIAA0677 is a 1066 amino acid protein, which contains one JmjC domain, two Tudor domains and two PHD-type zinc fingers. KDM4A localizes in nucleus and belongs to the JHDM3 histone demethylase family. KDM4A is histone de-methylase that specifically demethylates Lys 9 and Lys 36 residues of Histone H3, thereby playing a central role in histone code. JMJD2A demethylation of lysine residues will generate formaldehyde and succinate. KDM4A also participates in transcriptional repression of ASCL2 and E2F-responsive promoters via the recruitment of histone deacetylases and NCOR1, respectively. JMJD2A is a ubiquitously expressed nuclear protein. KDM4A exists as two isoforms. The short isoform of KDM4A in which the N-terminal demethylase domains has been deleted. The molecular weight of short isoform is 55Da.

Storage

Storage:
Store at -20°C. Avoid exposure to light. Stable for one year after shipment.

Storage Buffer:
PBS with 50% Glycerol, 0.05% Proclin300, 0.5% BSA, pH 7.3.

Aliquoting is unnecessary for -20°C storage

For technical support and original validation data for this product please contact:

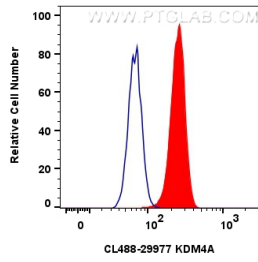
T: 4006900926

E: Proteintech-CN@ptglab.com

W: ptgcn.com

This product is exclusively available under Proteintech Group brand and is not available to purchase from any other manufacturer.

Selected Validation Data



1x10⁶ A549 cells were intracellularly stained with 0.8 ug Coralite® Plus 488 Kdm4a Polyclonal Antibody (CL488-29977)(red), or 0.8 ug Coralite® Plus 488-conjugated Rabbit IgG control Rabbit PolyAb (CL488-30000) (blue). Cells were fixed and permeabilized with Transcription Factor Staining Buffer Kit (PF00011).