

For Research Use Only

# CoraLite® Plus 488-conjugated RIF1 Polyclonal antibody



Catalog Number: CL488-30119

## Basic Information

Catalog Number:

CL488-30119

Size:

1000 µg/ml

Source:

Rabbit

Isotype:

IgG

Immunogen Catalog Number:

AG32422

GenBank Accession Number:

NM\_001177663.1

GeneID (NCBI):

55183

UNIPROT ID:

Q5UIPO

Full Name:

RAP1 interacting factor homolog  
(yeast)

Calculated MW:

274 kDa

Observed MW:

300 kDa

Purification Method:

Antigen affinity purification

Recommended Dilutions:

IF/ICC 1:50-1:500

Excitation/Emission maxima  
wavelengths:

493 nm / 522 nm

## Applications

Tested Applications:

IF/ICC

Species Specificity:

Human

Positive Controls:

IF/ICC : HEK-293 cells, HeLa cells

## Background Information

RIF1 (Rap1-interacting factor 1) is a multifunctional chromosome stability protein implicated in controlling DNA replication and repair. Human RIF1 can interact with protein phosphatase 1 (PP1) and the interaction is crucial for controlling DNA replication by limiting phosphorylation of the MCM complex (PMID: 28077461). RIF1 also acts with PP1 to protect nascent DNA from overdegradation at stalled replication forks (PMID: 31141682). RIF1 promotes non-homologous end joining (NHEJ) in double strand break (DSB) repair (PMID: 30443189). Research studies show that RIF1 is overexpressed in breast cancer tissues and is upregulated in NSCLC tissues (PMID: 30237512).

## Storage

Storage:

Store at -20°C. Avoid exposure to light. Stable for one year after shipment.

Storage Buffer:

PBS with 50% Glycerol, 0.05% Proclin300, 0.5% BSA, pH 7.3.

Aliquoting is unnecessary for -20°C storage

For technical support and original validation data for this product please contact:

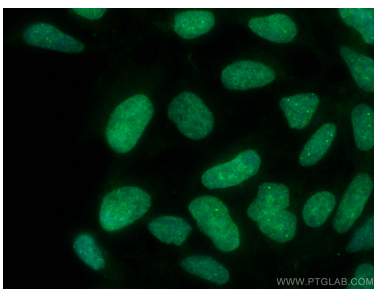
T: 4006900926

E: [Proteintech-CN@ptglab.com](mailto:Proteintech-CN@ptglab.com)

W: [ptgcn.com](http://ptgcn.com)

This product is exclusively available under Proteintech Group brand and is not available to purchase from any other manufacturer.

## Selected Validation Data



Immunofluorescent analysis of (4% PFA) fixed HEK-293 cells using CoraLite® Plus 488 RIF1 antibody (CL488-30119) at dilution of 1:200.