

For Research Use Only

CoraLite® Plus 488-conjugated EGFR Polyclonal antibody



Catalog Number: CL488-30139

Basic Information

Catalog Number:

CL488-30139

Size:

1000 µg/ml

Source:

Rabbit

Isotype:

IgG

GenBank Accession Number:

NM_005228.5

GeneID (NCBI):

1956

UNIPROT ID:

P00533

Full Name:

epidermal growth factor receptor
(erythroblastic leukemia viral (v-erb-
b) oncogene homolog, avian)

Calculated MW:

134kd

Observed MW:

145-165 kDa

Purification Method:

Antigen affinity purification

Recommended Dilutions:

IF 1:50-1:500

Excitation/Emission maxima
wavelengths:

493 nm / 522 nm

Applications

Tested Applications:

IF/ICC, FC

Species Specificity:

Human

Positive Controls:

IF : A431 cells,

Background Information

EGFR is a receptor for EGF, but also for other members of the EGF family, as TGF- α , amphiregulin, betacellulin, heparin-binding EGF-like growth factor, GP30 and vaccinia virus growth factor. ERBB1 is involved in the control of cell growth and differentiation. Phosphorylates MUC1 in breast cancer cells and increases the interaction of MUC1 with C-SRC and CTNNB1/beta-catenin. Isoform 2/truncated isoform of ERBB1 may act as an antagonist. EGFR is associated with lung cancer.

Storage

Storage:

Store at -20°C. Avoid exposure to light. Stable for one year after shipment.

Storage Buffer:

PBS with 50% Glycerol, 0.05% Proclin300, 0.5% BSA, pH 7.3.

Aliquoting is unnecessary for -20°C storage

For technical support and original validation data for this product please contact:

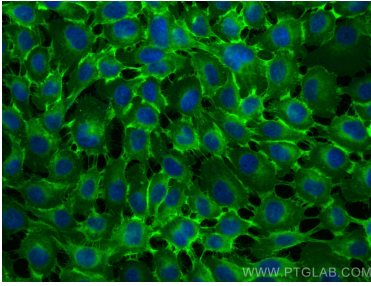
T: 4006900926

E: Proteintech-CN@ptglab.com

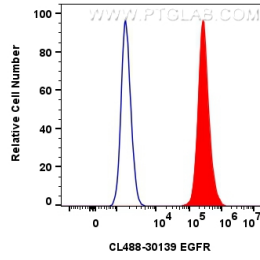
W: ptgcn.com

This product is exclusively available under Proteintech Group brand and is not available to purchase from any other manufacturer.

Selected Validation Data



Immunofluorescent analysis of (-20°C Methanol) fixed A431 cells using Coralite® Plus 488 EGFR antibody (CL488-30139) at dilution of 1:200.



1x10⁶ A431 cells were intracellularly stained with 0.4 ug Coralite® Plus 488 EGFR Polyclonal Antibody (CL488-30139)(red), or 0.4 ug Coralite® Plus 488-conjugated Rabbit IgG control Rabbit PolyAb (CL488-30000) (blue). Cells were not fixed.