

For Research Use Only

# CoraLite® Plus 488-conjugated LRRC50 Polyclonal antibody



Catalog Number: **CL488-30156**

## Basic Information

<b>Catalog Number:</b> CL488-30156	<b>GenBank Accession Number:</b> BC024009	<b>Purification Method:</b> Antigen affinity purification
<b>Size:</b> 1000 µg/ml	<b>GeneID (NCBI):</b> 123872	<b>Recommended Dilutions:</b> IF-P 1:50-1:500
<b>Source:</b> Rabbit	<b>UNIPROT ID:</b> Q8NEP3	<b>Excitation/Emission maxima wavelengths:</b> 493 nm / 522 nm
<b>Isotype:</b> IgG	<b>Full Name:</b> leucine rich repeat containing 50	
<b>Immunogen Catalog Number:</b> AG32822	<b>Calculated MW:</b> 725 aa, 80 kDa	

## Applications

<b>Tested Applications:</b> IF-P	<b>Positive Controls:</b> IF-P : mouse testis tissue,
<b>Species Specificity:</b> Human, mouse	

## Background Information

LRRC50 is a cilium-specific protein required for the stability of the ciliary architecture, it plays a role in cytoplasmic preassembly of dynein arms.

## Storage

**Storage:**  
Store at -20°C. Avoid exposure to light. Stable for one year after shipment.  
**Storage Buffer:**  
PBS with 50% Glycerol, 0.05% Proclin300, 0.5% BSA, pH 7.3.  
Aliquoting is unnecessary for -20°C storage

For technical support and original validation data for this product please contact:

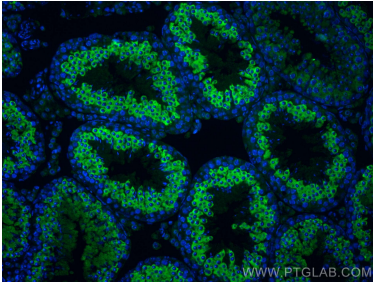
T: 4006900926

E: [Proteintech-CN@ptglab.com](mailto:Proteintech-CN@ptglab.com)

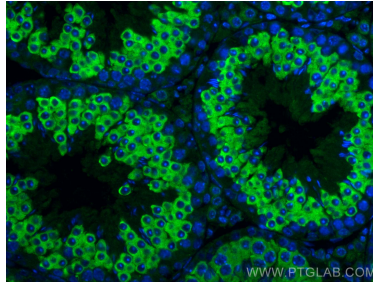
W: [ptgcn.com](http://ptgcn.com)

**This product is exclusively available under Proteintech Group brand and is not available to purchase from any other manufacturer.**

## Selected Validation Data



Immunofluorescent analysis of (4% PFA) fixed paraffin-embedded mouse testis tissue using CoraLite® Plus 488 LRRRC50 antibody (CL488-30156) at dilution of 1:200. Heat mediated antigen retrieval with Tris-EDTA buffer (pH 9.0).



Immunofluorescent analysis of (4% PFA) fixed paraffin-embedded mouse testis tissue using CoraLite® Plus 488 LRRRC50 antibody (CL488-30156) at dilution of 1:200. Heat mediated antigen retrieval with Tris-EDTA buffer (pH 9.0).