

For Research Use Only

# CoraLite® Plus 488-conjugated DSE Monoclonal antibody

Catalog Number:CL488-60041



## Basic Information

<b>Catalog Number:</b> CL488-60041	<b>GenBank Accession Number:</b> BC039245	<b>Purification Method:</b> Euglobulin precipitation
<b>Size:</b> 1000 ug/ml	<b>GeneID (NCBI):</b> 29940	<b>CloneNo.:</b> 2C9F7
<b>Source:</b> Mouse	<b>UNIPROT ID:</b> Q9UL01	<b>Recommended Dilutions:</b> IF/ICC 1:50-1:500
<b>Isotype:</b> IgM	<b>Full Name:</b> dermatan sulfate epimerase	<b>Excitation/Emission maxima wavelengths:</b> 493 nm / 522 nm
<b>Immunogen Catalog Number:</b> AG0695	<b>Calculated MW:</b> 958 aa, 110 kDa	
	<b>Observed MW:</b> 100 kDa	

## Applications

<b>Tested Applications:</b> IF/ICC, FC (Intra)	<b>Positive Controls:</b> IF/ICC : HeLa cells,
<b>Species Specificity:</b> human	

## Background Information

DSE, also named as SART2 and DSEPI, is an enzyme that converts D-glucuronic acid to L-iduronic acid residues in dermatan sulphate biosynthesis. It is also identified to be a tumour-associated antigen. DSE is recognized by cytotoxic T cells (CTLs) and its enhanced expression in many cancers has been reported. DSE is a potential candidate for a tumour antigen with immunogenicity.

## Storage

**Storage:**  
Store at -20°C. Avoid exposure to light. Stable for one year after shipment.  
**Storage Buffer:**  
PBS with 50% Glycerol, 0.05% Proclin300, 0.5% BSA, pH 7.3.  
**Aliquoting is unnecessary for -20°C storage**

For technical support and original validation data for this product please contact:

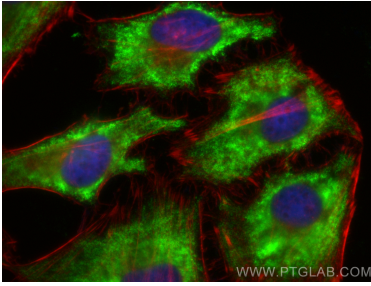
T: 4006900926

E: [Proteintech-CN@ptglab.com](mailto:Proteintech-CN@ptglab.com)

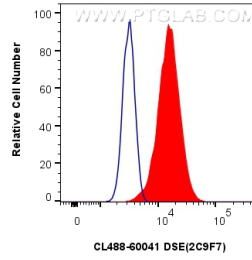
W: [ptgcn.com](http://ptgcn.com)

**This product is exclusively available under Proteintech Group brand and is not available to purchase from any other manufacturer.**

## Selected Validation Data



Immunofluorescent analysis of (-20°C Ethanol) fixed HeLa cells using CoraLite® Plus 488 DSE antibody (CL488-60041, Clone: 2C9F7) at dilution of 1:200, CL594-Phalloidin (red).



1x10<sup>6</sup> HeLa cells were intracellularly stained with 0.4 ug CoraLite® Plus 488-conjugated DSE Monoclonal antibody (CL488-60041, Clone:2C9F7) (red), or 0.4 ug Isotype Control (CL488-66360-1) (blue). Cells were fixed with 4% PFA and permeabilized with Flow Cytometry Perm Buffer (PF00011-C).