

For Research Use Only

# CoraLite® Plus 488-conjugated EMILIN1 Monoclonal antibody



Catalog Number: CL488-60047

## Basic Information

<b>Catalog Number:</b> CL488-60047	<b>GenBank Accession Number:</b> BC007530	<b>Purification Method:</b> Protein G purification
<b>Size:</b> 1000 µg/ml	<b>GeneID (NCBI):</b> 11117	<b>CloneNo.:</b> 2A5C8
<b>Source:</b> Mouse	<b>UNIPROT ID:</b> Q9Y6C2	<b>Recommended Dilutions:</b> IF-P 1:50-1:500
<b>Isotype:</b> IgG1	<b>Full Name:</b> elastin microfibril interfacier 1	<b>Excitation/Emission maxima wavelengths:</b> 493 nm / 522 nm
<b>Immunogen Catalog Number:</b> AG1016	<b>Calculated MW:</b> 107 kDa	
	<b>Observed MW:</b> 120-130 kDa	

## Applications

<b>Tested Applications:</b> IF-P	<b>Positive Controls:</b> IF-P: human ovary tumor tissue,
<b>Species Specificity:</b> human	

## Background Information

EMILIN1, also named as EMILIN, EMILIN-1, gp115 and EMI, may be responsible for anchoring smooth muscle cells to elastic fibers, and may be involved not only in the formation of the elastic fiber, but also in the processes that regulate vessel assembly. It has cell adhesive capacity. EMILIN1 is a negative regulator of the transforming growth factor-beta (TGF-beta) signaling, which is involved in blood pressure (BP) homeostasis (PMID:20186130). EMILIN1 may play a key role in hypertensive vascular remodeling. TGF β proteins are the main regulators of blood vessel development and maintenance, and EMILIN1 inhibits TGF β signaling by binding specifically to the proTGF β precursor and preventing its maturation by furin convertases in the extracellular space (PMID:19922630).

## Storage

**Storage:**  
Store at -20°C. Avoid exposure to light.  
**Storage Buffer:**  
PBS with 50% Glycerol, 0.05% Proclin300, 0.5% BSA, pH 7.3.  
**Aliquoting is unnecessary for -20°C storage**

For technical support and original validation data for this product please contact:

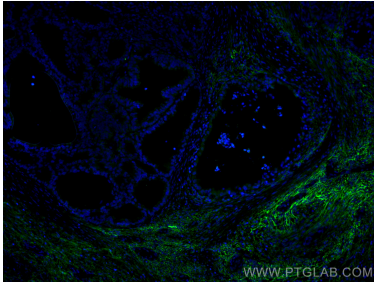
T: 4006900926

E: [Proteintech-CN@ptglab.com](mailto:Proteintech-CN@ptglab.com)

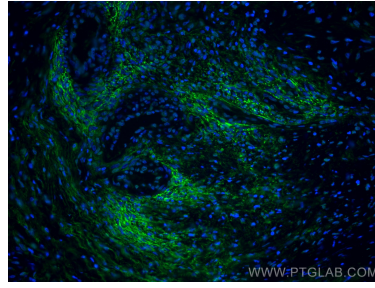
W: [ptgcn.com](http://ptgcn.com)

**This product is exclusively available under Proteintech Group brand and is not available to purchase from any other manufacturer.**

## Selected Validation Data



Immunofluorescent analysis of (4% PFA) fixed human ovary tumor tissue using CoraLite® Plus 488 EMILIN1 antibody (CL488-60047, Clone: 2A5C8) at dilution of 1:200.



Immunofluorescent analysis of (4% PFA) fixed human ovary tumor tissue using CoraLite® Plus 488 EMILIN1 antibody (CL488-60047, Clone: 2A5C8) at dilution of 1:200.