

For Research Use Only

CoraLite® Plus 488-conjugated GFAP

Monoclonal antibody



Catalog Number: CL488-60190

4 Publications

Basic Information

Catalog Number: CL488-60190	GenBank Accession Number: BC013596	Purification Method: Protein A purification
Size: 1000 µg/ml	GeneID (NCBI): 2670	CloneNo.: 4B2E10
Source: Mouse	UNIPROT ID: P14136	Recommended Dilutions: IF 1:50-1:200
Isotype: IgG2a	Full Name: glial fibrillary acidic protein	Excitation/Emission maxima wavelengths: 493 nm / 522 nm
Immunogen Catalog Number: AG10452	Calculated MW: 432 aa, 50 kDa	

Applications

Tested Applications: FC (Intra), IF/ICC	Positive Controls: IF : mouse brain tissue,
Cited Applications: IF	
Species Specificity: human, mouse, rat, pig	
Cited Species: mouse, rat	

This antibody is not recommended for immunocytofluorescent assays. It is not suitable for frozen sections.

Background Information

GFAP (Glial fibrillary acidic protein) is a type III intermediate filament (IF) protein specific to the central nervous system (CNS). GFAP is one of the main components of the intermediate filament network in astrocytes and has been proposed as playing a role in cell migration, cell motility, maintaining mechanical strength, and in mitosis. GFAP is expressed in central nervous system cells, predominantly in astrocytes. GFAP is commonly used as an astrocyte marker. However, GFAP is also present in peripheral glia and in non-CNS cells, including fibroblasts, chondrocytes, lymphocytes, and liver stellate cells (PMID: 21219963). Astrocytes express 10 different isoforms of GFAP that differ in the rod and tail domains (PMID: 25726916), which means that they differ in molecular size. Isoform expression varies during the development and across different subtypes of astrocytes. Not all isoforms are upregulated in reactive astrocytes. Intermediate filament proteins are regulated by phosphorylation. Six phosphorylation sites have been identified in GFAP protein, at least some of which are reported to control filament assembly (PMID: 21219963). GFAP localizes to intermediate filaments and stains well in astrocyte cellular processes. This antibody is conjugated with CL488, Ex/Em 488 nm/515 nm.

Notable Publications

Author	Pubmed ID	Journal	Application
Dawei Sun	34487578	J Neurosci Res	IF
Hongyan Jiang	34289379	Brain Res	IF
Naseer A Kutchy	35462907	Front Pharmacol	IF

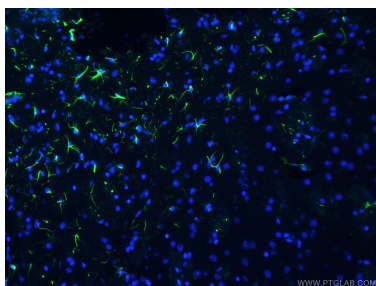
Storage

Storage:
Store at -20°C. Avoid exposure to light. Stable for one year after shipment.
Storage Buffer:
PBS with 50% Glycerol, 0.05% Proclin300, 0.5% BSA, pH 7.3.
Aliquoting is unnecessary for -20°C storage

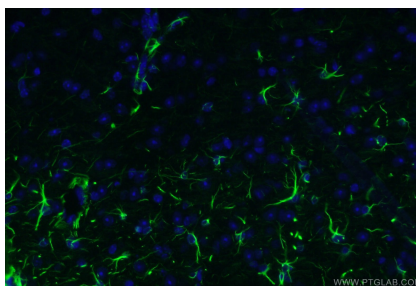
For technical support and original validation data for this product please contact:
T: 4006900926 E: Proteintech-CN@ptglab.com W: ptgcn.com

This product is exclusively available under Proteintech Group brand and is not available to purchase from any other manufacturer.

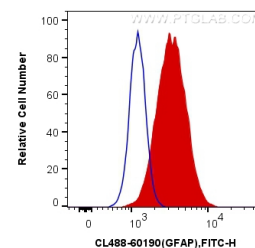
Selected Validation Data



Immunofluorescent analysis of (4% PFA) fixed mouse brain tissue using CL488-60190 (GFAP antibody) at dilution of 1:100.



Immunofluorescent analysis of (4% PFA) fixed mouse brain tissue using CL488-60190 (GFAP antibody) at dilution of 1:100.



1X10⁶ Jurkat cells were intracellularly stained with 0.4 ug CoraLite® Plus 488 Anti-Human GFAP (CL488-60190, Clone:4B2E10) (red), or 0.4 ug Mouse IgG2a Isotype Control (CL488-66360-2, Clone: K11A1B2A2) (blue). Cells were fixed with 4% PFA and permeabilized with Flow Cytometry Perm Buffer (PF00011-C).