

For Research Use Only

CoraLite®488-conjugated AKT Monoclonal antibody



Catalog Number:CL488-60203

2 Publications

Basic Information

Catalog Number:

CL488-60203

Size:

1000 µg/ml

Source:

Mouse

Isotype:

IgG1

Immunogen Catalog Number:

AG16695

GenBank Accession Number:

BC000479

GeneID (NCBI):

207

UNIPROT ID:

P31749

Full Name:

v-akt murine thymoma viral oncogene homolog 1

Calculated MW:

56 kDa

Purification Method:

Protein G purification

CloneNo.:

2C5D1

Recommended Dilutions:

IF 1:50-1:100

Excitation/Emission maxima wavelengths:

491 nm / 516 nm

Applications

Tested Applications:

IF/ICC

Cited Applications:

WB

Species Specificity:

human, mouse, rat

Cited Species:

human, mouse

Positive Controls:

IF : MCF-7 cells,

Background Information

The serine-threonine protein kinase AKT1 is catalytically inactive in serum-starved primary and immortalized fibroblasts. Survival factors can suppress apoptosis in a transcription-independent manner by activating the serine/threonine kinase AKT1, which then phosphorylates and inactivates components of the apoptotic machinery. This antibody detects all the members of AKT with/without phospho- modification. This antibody is CL488(Ex/Em 488 nm/515 nm) conjugated.

Notable Publications

Author	Pubmed ID	Journal	Application
Xin Zhou	36243809	Cell Death Discov	WB
Zhixiong Liu	35143418	J Clin Invest	WB

Storage

Storage:

Store at -20°C. Avoid exposure to light. Stable for one year after shipment.

Storage Buffer:

PBS with 50% Glycerol, 0.05% Proclin300, 0.5% BSA, pH 7.3.

Aliquoting is unnecessary for -20°C storage

For technical support and original validation data for this product please contact:

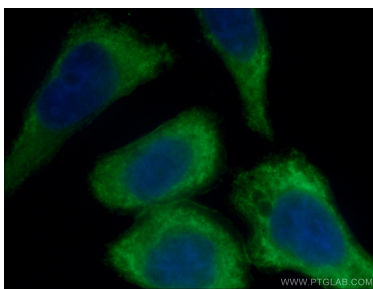
T: 4006900926

E: Proteintech-CN@ptglab.com

W: ptgcn.com

This product is exclusively available under Proteintech Group brand and is not available to purchase from any other manufacturer.

Selected Validation Data



Immunofluorescent analysis of (-20°C Ethanol) fixed MCF-7 cells using CL488-60203 (AKT antibody) at dilution of 1:50.