

For Research Use Only

CoraLite® Plus 488-conjugated Cytoglobin Monoclonal antibody



Catalog Number: CL488-60228

Basic Information

Catalog Number: CL488-60228	GenBank Accession Number: BC029798	Purification Method: Protein G purification
Size: 1000 µg/ml	GeneID (NCBI): 114757	CloneNo.: 4C7E11
Source: Mouse	UNIPROT ID: Q8WWM9	Recommended Dilutions: IF 1:50-1:500
Isotype: IgG1	Full Name: cytoglobin	Excitation/Emission maxima wavelengths: 493 nm / 522 nm
Immunogen Catalog Number: AG4161	Calculated MW: 190 aa, 21 kDa	
	Observed MW: 27-29 kDa	

Applications

Tested Applications: IF/ICC	Positive Controls: IF : HeLa cells,
Species Specificity: human, mouse, pig, rat	

Background Information

Cytoglobin is a ubiquitously expressed hexacoordinate hemoglobin that may facilitate diffusion of oxygen through tissues. The protein, with calculated MW of 21 kDa, runs as a 29 kDa one in canine retina, kidney, liver, lung, and heart. It may be caused by posttranslational modification of the protein. Various immuno-staining patterns were reported including nuclear, cytoplasm and extracellular location.

Storage

Storage:
Store at -20°C. Avoid exposure to light. Stable for one year after shipment.
Storage Buffer:
PBS with 50% Glycerol, 0.05% Proclin300, 0.5% BSA, pH 7.3.
Aliquoting is unnecessary for -20°C storage

For technical support and original validation data for this product please contact:

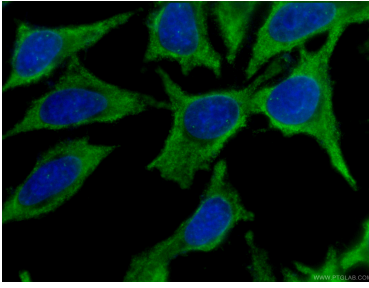
T: 4006900926

E: Proteintech-CN@ptglab.com

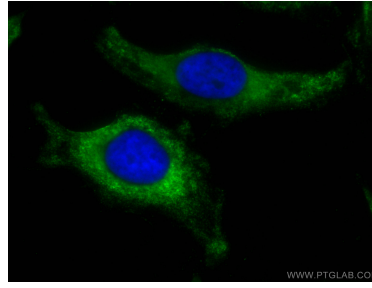
W: ptgcn.com

This product is exclusively available under Proteintech Group brand and is not available to purchase from any other manufacturer.

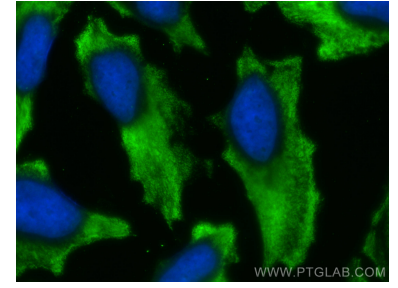
Selected Validation Data



Immunofluorescent analysis of (-20°C Ethanol) fixed HeLa cells using CL488-60228 (Cytoglobin antibody) at dilution of 1:100.



Immunofluorescent analysis of (-20°C Methanol) fixed HeLa cells using CoraLite® Plus 488 Cytoglobin antibody (CL488-60228, Clone: 4C7E11) at dilution of 1:200.



Immunofluorescent analysis of (-20°C Methanol) fixed HeLa cells using CoraLite® Plus 488 Cytoglobin antibody (CL488-60228, Clone: 4C7E11) at dilution of 1:200.