

For Research Use Only

# CoraLite® Plus 488-conjugated SCGF Monoclonal antibody



Catalog Number: CL488-60295

## Basic Information

<b>Catalog Number:</b> CL488-60295	<b>GenBank Accession Number:</b> BC005810	<b>Purification Method:</b> Protein A purification
<b>Size:</b> 6320	<b>GeneID (NCBI):</b> 6320	<b>CloneNo.:</b> 4H11E4
<b>Source:</b> Mouse	<b>UNIPROT ID:</b> Q9Y240	<b>Recommended Dilutions:</b> IF/ICC 1:50-1:500
<b>Isotype:</b> IgG2b	<b>Full Name:</b> C-type lectin domain family 11, member A	<b>Excitation/Emission maxima wavelengths:</b> 493 nm / 522 nm
<b>Immunogen Catalog Number:</b> AG21365	<b>Calculated MW:</b> 36 kDa	
	<b>Observed MW:</b> 36 kDa	

## Applications

<b>Tested Applications:</b> IF/ICC	<b>Positive Controls:</b> IF/ICC : HepG2 cells,
<b>Species Specificity:</b> human	

## Background Information

CLEC11A, also named as CLECSF3, LSLCL, SCGF and p47, stimulates the proliferation and differentiation of hematopoietic precursor cells from various lineages, including erythrocytes, lymphocytes, granulocytes and macrophages. CLEC11A acts synergistically with other cytokines, including IL-3, GCSF, GMCSF and FLT3 ligand. It suppresses SCF-stimulated erythrocyte proliferation.

## Storage

**Storage:**  
Store at -20°C. Avoid exposure to light. Stable for one year after shipment.  
**Storage Buffer:**  
PBS with 50% Glycerol, 0.05% Proclin300, 0.5% BSA, pH 7.3.  
Aliquoting is unnecessary for -20°C storage

For technical support and original validation data for this product please contact:

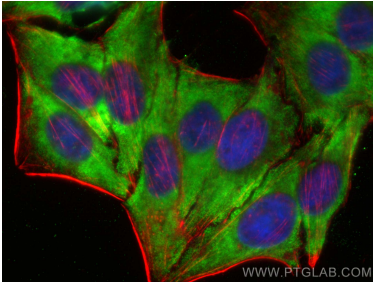
T: 4006900926

E: [Proteintech-CN@ptglab.com](mailto:Proteintech-CN@ptglab.com)

W: [ptgcn.com](http://ptgcn.com)

**This product is exclusively available under Proteintech Group brand and is not available to purchase from any other manufacturer.**

## Selected Validation Data



Immunofluorescent analysis of (-20°C Ethanol) fixed HepG2 cells using CoraLite® Plus 488 SCGF antibody (CL488-60295, Clone: 4H11E4) at dilution of 1:200, CL594-phalloidin (red).