

For Research Use Only

CoraLite® Plus 488 Anti-Mouse CD8a (53-6.7)



Catalog Number: CL488-65069

4 Publications

Basic Information

Catalog Number: CL488-65069	GenBank Accession Number: BC030679	Purification Method: Affinity purification
Size: 100ug, 500 µg/ml	GeneID (NCBI): 12525	CloneNo.: 53-6.7
Source: Rat	UNIPROT ID: P01731	Recommended Dilutions: IF 1:250-1:1000
Isotype: IgG2a, kappa	Full Name: CD8 antigen, alpha chain	Excitation/Emission maxima wavelengths: 493 nm / 522 nm

Applications

Tested Applications: FC, IF/ICC	Positive Controls: IF : mouse splenocytes,
Cited Applications: IF	
Species Specificity: Mouse	
Cited Species: human	

Background Information

CD8 is a transmembrane glycoprotein composed of two disulfide-linked chains. It can be present as a homodimer of CD8 α or as a heterodimer of CD8 α and CD8 β (PMID: 3264320; 8253791). CD8 is found on most thymocytes. The majority of class I-restricted T cells express mostly the CD8 α β heterodimer while CD8 α α homodimers alone have been found on some gut intraepithelial T cells, on some T cell receptor (TCR) γ δ T cells and on NK cells (PMID: 2111591; 1831127; 8420975). CD8 acts as a co-receptor that binds to MHC class-I and participates in cytotoxic T cell activation (PMID: 8499079). During T cell development, CD8 is required for positive selection of CD4-/CD8+ T cells (PMID: 1968084).

Notable Publications

Author	Pubmed ID	Journal	Application
Yinghui Shang	36034656	Front Chem	IF
Chushu Li	34341130	J Immunother Cancer	IF
Mengyun Peng	38228273	J Control Release	IF

Storage

Storage:
Store at 2-8°C. Avoid exposure to light. Stable for one year after shipment.
Storage Buffer:
PBS with 0.1% sodium azide and 0.5% BSA, pH 7.3.

For technical support and original validation data for this product please contact:

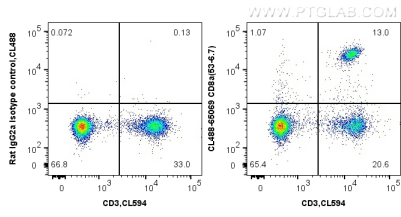
T: 4006900926

E: Proteintech-CN@ptglab.com

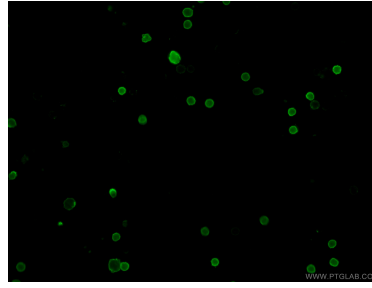
W: ptgcn.com

This product is exclusively available under Proteintech Group brand and is not available to purchase from any other manufacturer.

Selected Validation Data



1X10⁶ mouse splenocytes were surface co-stained with CoraLite® 594 Anti-Mouse CD3 and 0.5 ug CoraLite® Plus 488 Anti-Mouse CD8a (CL488-65069, Clone: 53-6.7) or 0.5 ug Isotype Control. Cells were not fixed.



Immunofluorescent analysis of mouse splenocytes using CoraLite® Plus 488-conjugated Anti-Mouse CD8a (CL488-65069, Clone: 53-6.7) at dilution of 1:500.