

For Research Use Only

CoraLite® Plus 488 Anti-Mouse FcεR1 (MAR-1)



Catalog Number: CL488-65091

Basic Information

Catalog Number:

CL488-65091

Size:

100 tests, 5 µl/test

Source:

Armenian Hamster

Isotype:

IgG

GenBank Accession Number:

BC125455

GeneID (NCBI):

14125

Full Name:

Fc receptor, IgE, high affinity I, alpha polypeptide

Purification Method:

Affinity purification

CloneNo.:

MAR-1

Excitation/Emission maxima

wavelengths:

493 nm / 522 nm

Applications

Tested Applications:

FC

Species Specificity:

Mouse

Background Information

Fc epsilon Receptor I alpha (FcεR1a) is a single-pass type I membrane protein which contains 2 immunoglobulin-like domains. FcεR1a forms a tetrameric complex with one beta and two gamma subunits (PMID: 19406478). FcεR1 is the high-affinity receptor for the Fc region of immunoglobulin E (IgE) (PMID: 1532373). It is expressed on mast cells and basophils and plays a central role in the allergic response (PMID: 2148316).

Storage

Storage:

Store at 2-8°C. Avoid exposure to light. Stable for one year after shipment.

Storage Buffer:

PBS with 0.1% sodium azide and 0.5% BSA, pH 7.3.

For technical support and original validation data for this product please contact:

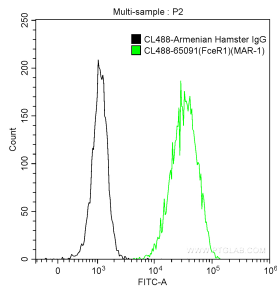
T: 4006900926

E: Proteintech-CN@ptglab.com

W: ptgcn.com

This product is exclusively available under Proteintech Group brand and is not available to purchase from any other manufacturer.

Selected Validation Data



1X10⁶ MC/9 cells were surface stained with 5 ul CoraLite® Plus 488 Anti-Mouse FcεR1 (CL488-65091, Clone:MAR-1) (green) or CoraLite® Plus 488 Armenian Hamster IgG isotype control (black). Cells were not fixed.