

# CoraLite<sup>®</sup> Plus 488 Anti-Human CD11b (ICRF44)

Catalog Number: **CL488-65116**

## Basic Information

**Catalog Number:**

CL488-65116

**Size:**

100 tests, 5 µl/test

**Source:**

Mouse

**Isotype:**

IgG1, kappa

**GenBank Accession Number:**

BC096346

**GeneID (NCBI):**

3684

**ENSEMBL Gene ID:**

ENSG00000169896

**UNIPROT ID:**

P11215

**Full Name:**

integrin, alpha M (complement component 3 receptor 3 subunit)

**Calculated MW:**

1152 aa, 127 kDa

**Purification Method:**

Affinity purification

**CloneNo.:**

ICRF44

**Recommended Dilutions:**

IF 1:200-1:800

**Excitation/Emission maxima wavelengths:**

493 nm / 522 nm

## Applications

**Tested Applications:**

FC, IF/ICC

**Species Specificity:**

Human

**Positive Controls:**

IF : human peripheral blood mononuclear cells,

## Background Information

Integrins are cell adhesion receptors that are heterodimers composed of non-covalently associated  $\alpha$  and  $\beta$  subunits (PMID: 9779984). CD11b, also known as Integrin alpha M or CR3A, belongs to the integrin alpha chain family. CD11b forms an  $\alpha$  /  $\beta$  heterodimer with CD18 (integrin  $\beta$  2). CD11b/CD18 is implicated in various adhesive interactions of monocytes, macrophages and granulocytes as well as in mediating the uptake of complement-coated particles and pathogens (PMID: 9558116; 20008295). CD11b/CD18 is a receptor for the complement protein fragment iC3b, and is also a receptor for fibrinogen, factor X and ICAM1 (PMID: 2971974; 15485828).

## Storage

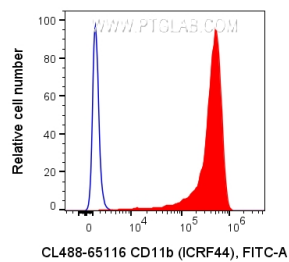
**Storage:**

Store at 2-8°C. Avoid exposure to light. Stable for one year after shipment.

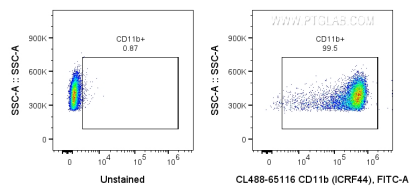
**Storage Buffer:**

PBS with 0.1% sodium azide and 0.5% BSA, pH 7.3.

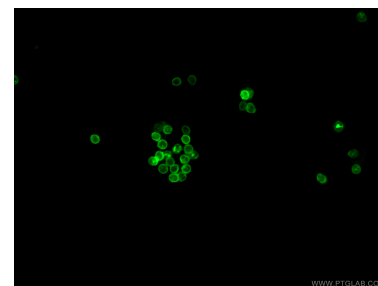
## Selected Validation Data



1X10<sup>6</sup> human PBMCs were surface stained with 5 ul CoraLite® Plus 488 Anti-Human CD11b (CL488-65116, Clone: ICRF44) (red) or unstained (blue). Cells were not fixed. Monocytes were gated.



1X10<sup>6</sup> human PBMCs were surface stained with 5 ul CoraLite® Plus 488 Anti-Human CD11b (CL488-65116, Clone: ICRF44) or unstained. Cells were not fixed. Monocytes were gated.



Immunofluorescent analysis of human peripheral blood mononuclear cells (PBMCs) using CoraLite® Plus 488-conjugated Anti-Human CD11b (CL488-65116, Clone: ICRF44) at dilution of 1:400.