

For Research Use Only

# CoraLite® Plus 488 Anti-Mouse PLVAP (MECA-32)



Catalog Number: **CL488-65214**

## Basic Information

<b>Catalog Number:</b> CL488-65214	<b>GenBank Accession Number:</b> BC013517	<b>Purification Method:</b> Protein A purification
<b>Size:</b> 100ug, 0.5 mg/ml	<b>GeneID (NCBI):</b> 84094	<b>CloneNo.:</b> MECA-32
<b>Source:</b> Rat	<b>UNIPROT ID:</b> Q91VC4	<b>Excitation/Emission maxima wavelengths:</b> 493 nm / 522 nm
<b>Isotype:</b> IgG2a, kappa	<b>Full Name:</b> plasmalemma vesicle associated protein	

## Applications

**Tested Applications:**  
FC

**Species Specificity:**  
Mouse

## Background Information

Plasmalemma vesicle-associated protein (PLVAP), also known as PV-1, PAL-E and MECA-32 antigen, is an endothelial cell-specific type II membrane N-glycosylated glycoprotein with a molecular weight of approximately 50-65 kDa, that forms homodimers in situ (PMID: 7626790; 30231925). The MECA-32 antibody, derived from rats immunized with murine lymph node stroma, shows high specificity for mouse endothelium in both embryonic and mature tissues (PMID: 2683264; 7626790). It recognizes most endothelial cells in the embryonic and in the adult mouse, with the exception of the brain, skeletal, and cardiac muscle, where the MECA-32 antigen has a more restricted distribution. In skeletal and cardiac muscle only small arterioles and venules express the MECA-32 antigen, while in the brain its expression is negatively correlated with the differentiation of the vasculature to form the blood brain barrier (PMID: 7626790).

## Storage

**Storage:**  
Store at 2-8°C. Avoid exposure to light. Stable for one year after shipment.  
**Storage Buffer:**  
PBS with 0.09% sodium azide.

For technical support and original validation data for this product please contact:

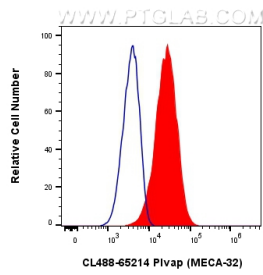
T: 4006900926

E: [Proteintech-CN@ptglab.com](mailto:Proteintech-CN@ptglab.com)

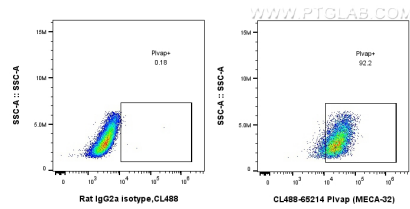
W: [ptgcn.com](http://ptgcn.com)

**This product is exclusively available under Proteintech Group brand and is not available to purchase from any other manufacturer.**

## Selected Validation Data



1X10<sup>6</sup> bEnd.3 cells were surface stained with 0.5 ug CoraLite® Plus 488 Anti-Mouse PLVAP (CL488-65214, Clone:MECA-32) (red), or 0.5 ug CoraLite® Plus 488 Rat IgG2a Isotype Control (2A3) (CL488-65209, Clone: 2A3) (blue). Cells were not fixed.



1X10<sup>6</sup> bEnd.3 cells were surface stained with 0.5 ug CoraLite® Plus 488 Anti-Mouse PLVAP (CL488-65214, Clone:MECA-32), or 0.5 ug CoraLite® Plus 488 Rat IgG2a Isotype Control (2A3) (CL488-65209, Clone: 2A3). Cells were not fixed.