

For Research Use Only

# CoraLite® Plus 488 Anti-Human IL-1 $\beta$ (2A7C6)



Catalog Number: CL488-65276

## Basic Information

<b>Catalog Number:</b> CL488-65276	<b>GenBank Accession Number:</b> BC008678	<b>Purification Method:</b> Affinity purification
<b>Size:</b> 100ug, 0.2 mg/mL	<b>GeneID (NCBI):</b> 3553	<b>CloneNo.:</b> 2A7C6
<b>Source:</b> Mouse	<b>ENSEMBL Gene ID:</b> ENSG00000125538	<b>Excitation/Emission maxima wavelengths:</b> 493 nm / 522 nm
<b>Isotype:</b> IgG1	<b>Full Name:</b> interleukin 1, beta	
<b>Immunogen Catalog Number:</b> HZ-1164	<b>Calculated MW:</b> 269 aa, 31 kDa	

## Applications

**Tested Applications:**  
FC (Intra)

**Species Specificity:**  
Human

## Background Information

Interleukin-1 is a pro-inflammatory cytokine with multiple biological effects. The IL-1 gene family encodes three proteins: IL-1 $\alpha$ , IL-1 $\beta$  and their naturally occurring inhibitor IL-1RN. Interleukin 1 $\beta$  (IL-1 $\beta$ ), mainly produced by blood monocytes and tissue macrophages, has been implicated in mediating both acute and chronic inflammation. IL-1 $\beta$  is known to be involved in a variety of cellular activities, including cell proliferation, differentiation and apoptosis. IL-1 $\beta$  is emerging as a key mediator of carcinogenesis that characterizes host-environment interactions. (PMID: 8630372; 12401481; 23704929; 24618930)

## Storage

**Storage:**  
Store at 2-8°C. Avoid exposure to light. Stable for one year after shipment.

**Storage Buffer:**  
PBS with 0.09% sodium azide and 0.5% BSA.

For technical support and original validation data for this product please contact:

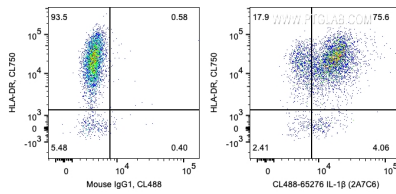
T: 4006900926

E: [Proteintech-CN@ptglab.com](mailto:Proteintech-CN@ptglab.com)

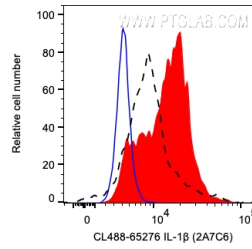
W: [ptgcn.com](http://ptgcn.com)

This product is exclusively available under Proteintech Group brand and is not available to purchase from any other manufacturer.

## Selected Validation Data



1X10<sup>6</sup> LPS and Brefeldin A treated human PBMCs were surface stained with Anti-Human HLA-DR then intracellularly stained with 0.2 ug CoraLite® Plus 488 Anti-Human IL-1 $\beta$  (CL488-65276, Clone:2A7C6) or Mouse IgG1 Isotype Control. Cells were fixed and permeabilized with Transcription Factor Staining Buffer Kit (PF00011). Monocytes were gated.



1X10<sup>6</sup> LPS and Brefeldin A treated human PBMCs were intracellularly stained with 0.2 ug CoraLite® Plus 488 Anti-Human IL-1 $\beta$  (CL488-65276, Clone:2A7C6) (red) or Mouse IgG1 Isotype Control (blue), or unactivated and Brefeldin A treated human PBMCs were intracellularly stained with 0.2 ug CoraLite® Plus 488 Anti-Human IL-1 $\beta$  (CL488-65276, Clone:2A7C6) (black, dashed line). Cells were fixed and permeabilized with Transcription Factor Staining Buffer Kit (PF00011).

