

For Research Use Only

# CoraLite® Plus 488 Anti-Human CD11a (TS2/4) Mouse IgG2a Recombinant Antibody



Catalog Number: **CL488-65563**

## Basic Information

<b>Catalog Number:</b> CL488-65563	<b>GenBank Accession Number:</b> BC008777	<b>Purification Method:</b> Protein A purification
<b>Size:</b> 100tests, 5 µl/test	<b>GeneID (NCBI):</b> 3683	<b>CloneNo.:</b> TS2/4
<b>Source:</b> Mouse	<b>ENSEMBL Gene ID:</b> ENSG00000005844	<b>Excitation/Emission maxima wavelengths:</b> 493 nm / 522 nm
<b>Isotype:</b> IgG2a	<b>UNIPROT ID:</b> P20701	
	<b>Full Name:</b> integrin, alpha L (antigen CD11A (p180), lymphocyte function- associated antigen 1; alpha polypeptide)	
	<b>Calculated MW:</b> 129 kDa	

## Applications

**Tested Applications:**  
FC  
**Species Specificity:**  
Human

## Background Information

CD11a, also known as integrin  $\alpha$  L or LFA-1  $\alpha$ , is a 170-180 kDa transmembrane glycoprotein that forms a heterodimer with CD18 (PMID: 7027264; 1672643). CD11a/CD18 (LFA-1) is expressed by all leukocytes and mediates cell adhesion through interactions with its ligands, intercellular adhesion molecule 1 (ICAM-1), ICAM-2, and ICAM-3 (PMID: 7479767). CD11a/CD18 also functions in lymphocyte costimulatory signaling (PMID: 1972160).

## Storage

**Storage:**  
Store at 2-8°C. Stable for one year after shipment.  
**Storage Buffer:**  
PBS with 0.09% sodium azide and 0.5% BSA.

For technical support and original validation data for this product please contact:

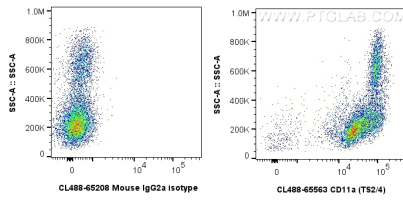
T: 4006900926

E: [Proteintech-CN@ptglab.com](mailto:Proteintech-CN@ptglab.com)

W: [ptgcn.com](http://ptgcn.com)

**This product is exclusively available under Proteintech Group brand and is not available to purchase from any other manufacturer.**

## Selected Validation Data



1x10<sup>6</sup> human PBMCs were surface stained with 5 ul CoraLite® Plus 488 Anti-Human CD11a Mouse Recombinant Antibody (CL488-65563, Clone:TS2/4), or CoraLite® Plus 488 Mouse IgG2a Isotype Control (CL488-65208, Clone: C1.18.4). Cells were incubated with FC Receptor Block prior to staining. Cells were not fixed.