

For Research Use Only

CoraLite® Plus 488 Anti-Rat CD45RA (OX-33) Mouse IgG2a Recombinant Antibody



Catalog Number: **CL488-65578**

Basic Information

Catalog Number: CL488-65578	GenBank Accession Number: XM_006249910	Purification Method: Protein A purification
Size: 100ug, 500 µg/ml	GeneID (NCBI): 24699	CloneNo.: OX-33
Source: Mouse	Full Name: protein tyrosine phosphatase, receptor type, C	Excitation/Emission maxima wavelengths: 493 nm / 522 nm
Isotype: IgG2a	Calculated MW: 143 kDa	

Applications

Tested Applications:
FC

Species Specificity:
rat

Background Information

CD45, also known as protein tyrosine phosphatase, receptor type C, is a type I transmembrane protein expressed on the surface of all haematopoietic cells with the exception of erythrocytes and platelets (PMID: 3489673; 28615666). CD45 is a pan-haematopoietic cell marker and has been shown to be essential for T- and B-cell activation and signaling (PMID: 9429890; 16378097). CD45 exists as multiple isoforms due to alternative splicing of three exons (4, 5, and 6, designated A, B, and C) in the extracellular domain (PMID: 12414720). CD45RA is expressed on naïve T cells, B cells, and monocytes (PMID: 1830500; 14687231).

Storage

Storage:
Store at 2-8°C. Avoid exposure to light.
Storage Buffer:
PBS with 0.09% sodium azide.

For technical support and original validation data for this product please contact:

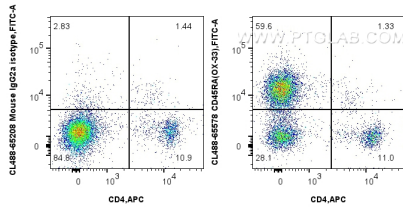
T: 4006900926

E: Proteintech-CN@ptglab.com

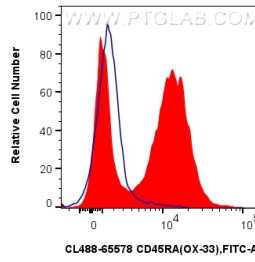
W: ptgcn.com

This product is exclusively available under Proteintech Group brand and is not available to purchase from any other manufacturer.

Selected Validation Data



1×10^6 rat splenocytes were surface stained with APC Anti-Rat CD4 and 5 ul CoraLite® Plus 488 Anti-Rat CD45RA Mouse IgG2a Recombinant Antibody (CL488-65578, Clone: OX-33), or CoraLite® Plus 488 Mouse IgG2a Isotype Control (CL488-65208, Clone: C1.18.4). Cells were not fixed.



1×10^6 rat splenocytes were surface stained with 5 ul CoraLite® Plus 488 Anti-Rat CD45RA Mouse IgG2a Recombinant Antibody (CL488-65578, Clone: OX-33) (red), or CoraLite® Plus 488 Mouse IgG2a Isotype Control (CL488-65208, Clone: C1.18.4) (blue). Cells were not fixed.