

For Research Use Only

# CoraLite® Plus 488 Anti-Human PD-1/CD279 (EH12.2H7) Mouse IgG2a Recombinant Antibody

Catalog Number: CL488-65586



## Basic Information

Catalog Number:

CL488-65586

Size:

100 tests, 5 ul/test

Source:

Mouse

Isotype:

IgG2a

GenBank Accession Number:

BC074740

GeneID (NCBI):

5133

Full Name:

programmed cell death 1

Calculated MW:

288 aa, 32 kDa

Purification Method:

Protein A purification

CloneNo.:

EH12.2H7

Excitation/Emission maxima wavelengths:

493 nm / 522 nm

## Applications

Tested Applications:

FC

Species Specificity:

human

## Background Information

Programmed cell death 1 (PD-1, also known as CD279) is an immunoinhibitory receptor that belongs to the CD28/CTLA-4 subfamily of the Ig superfamily. It is a 288 amino acid (aa) type I transmembrane protein composed of one Ig superfamily domain, a stalk, a transmembrane domain, and an intracellular domain containing an immunoreceptor tyrosine-based inhibitory motif (ITIM) as well as an immunoreceptor tyrosine-based switch motif (ITSM) (PMID: 18173375). PD-1 is expressed during thymic development and is induced in a variety of hematopoietic cells in the periphery by antigen receptor signaling and cytokines (PMID: 20636820). Engagement of PD-1 by its ligands PD-L1 or PD-L2 transduces a signal that inhibits T-cell proliferation, cytokine production, and cytolytic function (PMID: 19426218). It is critical for the regulation of T cell function during immunity and tolerance. Blockade of PD-1 can overcome immune resistance and also has been shown to have antitumor activity (PMID: 22658127; 23169436).

## Storage

Storage:

Store at 2-8°C. Avoid exposure to light. Stable for one year after shipment.

Storage Buffer:

PBS with 0.09% sodium azide and 0.5% BSA.

For technical support and original validation data for this product please contact:

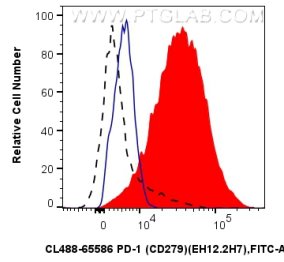
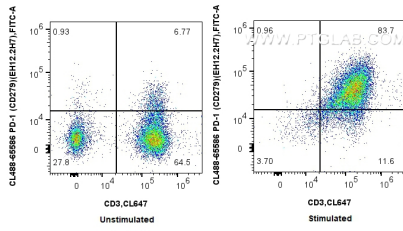
T: 4006900926

E: [Proteintech-CN@ptglab.com](mailto:Proteintech-CN@ptglab.com)

W: [ptgcn.com](http://ptgcn.com)

This product is exclusively available under Proteintech Group brand and is not available to purchase from any other manufacturer.

## Selected Validation Data



1x10<sup>6</sup> untreated or PHA treated human PBMCs were surface stained with CoraLite® Plus 647 Anti-Human CD3 and 5 ul CoraLite® Plus 488 Anti-Human PD-1 (CD279) Mouse IgG2a Recombinant Antibody (CL488-65586, Clone: EH12.2H7). Cells were not fixed.

1x10<sup>6</sup> PHA treated human PBMCs were surface stained with 5 ul CoraLite® Plus 488 Anti-Human PD-1 (CD279) Mouse IgG2a Recombinant Antibody (CL488-65586, Clone:EH12.2H7) (red) or CoraLite® Plus 488 Mouse IgG2a Isotype Control (CL488-65208, Clone: C.1.18.4) (blue). 1x10<sup>6</sup> untreated human PBMCs were surface stained with 5 ul CoraLite® Plus 488 Anti-Human PD-1 (CD279) Mouse IgG2a Recombinant Antibody (CL488-65586, Clone:EH12.2H7) (black, dashed). Cells