

For Research Use Only

# CoraLite® Plus 488 Anti-Human CD29 (TS2/16) Mouse IgG2a Recombinant Antibody



Catalog Number: **CL488-65601**

## Basic Information

<b>Catalog Number:</b> CL488-65601	<b>GenBank Accession Number:</b> BC020057	<b>Purification Method:</b> Protein A purification
<b>Size:</b> 100tests, 5 µl/test	<b>GeneID (NCBI):</b> 3688	<b>CloneNo.:</b> TS2/16
<b>Source:</b> Mouse	<b>ENSEMBL Gene ID:</b> ENSG00000150093	<b>Excitation/Emission maxima wavelengths:</b> 493 nm / 522 nm
<b>Isotype:</b> IgG2a	<b>Full Name:</b> integrin, beta 1 (fibronectin receptor, beta polypeptide, antigen CD29 includes MDF2, MSK12)	
	<b>Calculated MW:</b> 88 kDa	

## Applications

**Tested Applications:**  
FC

**Species Specificity:**  
human

## Background Information

Integrin beta-1 (ITGB1), also named as CD29, is a 130 kDa single chain type I glycoprotein that is expressed in a heterodimeric complex with one of six distinct  $\alpha$  subunits, comprising the very late activation antigen (VLA) subfamily of adhesion receptors. It is one of the essential surface molecules expressed on human MSC from bone marrow and other sources. The  $\beta$  1 subunit is also broadly expressed on lymphocytes and monocytes, weakly expressed on granulocytes, and not expressed on erythrocytes. These receptors are involved in a variety of cell-cell and cell-matrix interactions.

## Storage

**Storage:**  
Store at 2-8°C. Avoid exposure to light.  
**Storage Buffer:**  
PBS with 0.09% sodium azide and 0.5% BSA.

For technical support and original validation data for this product please contact:

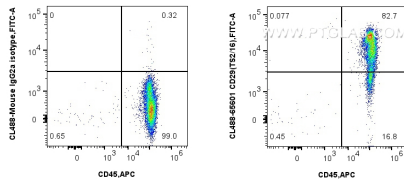
T: 4006900926

E: [Proteintech-CN@ptglab.com](mailto:Proteintech-CN@ptglab.com)

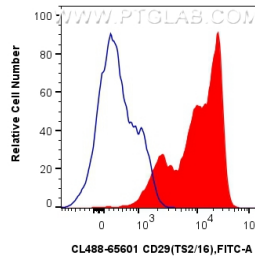
W: [ptgcn.com](http://ptgcn.com)

**This product is exclusively available under Proteintech Group brand and is not available to purchase from any other manufacturer.**

## Selected Validation Data



1x10<sup>6</sup> human PBMCs were surface stained with APC Anti-Human CD45 and CoraLite® Plus 488 Anti-Human CD29 (TS2/16) (CL488-65191, Clone: TS2/16) (right), or CoraLite® Plus 488 Mouse IgG2a Isotype Control (C1.18.4) (CL488-65208, Clone: C1.18.4) (left). Cells were incubated with FC Receptor Block prior to staining. Cells were not fixed.



1x10<sup>6</sup> human PBMCs were surface stained with 5ul CoraLite® Plus 488 Anti-Human CD29 (TS2/16) (CL488-65191, Clone: TS2/16) (red), or CoraLite® Plus 488 Mouse IgG2a Isotype Control (C1.18.4) (CL488-65208, Clone: C1.18.4) (blue). Cells were incubated with FC Receptor Block prior to staining. Cells were not fixed.