

For Research Use Only



# CoraLite® Plus 488 Anti-Human ALCAM (3A6) Mouse IgG2a Recombinant Antibody

Catalog Number: **CL488-65611**

## Basic Information

<b>Catalog Number:</b> CL488-65611	<b>GenBank Accession Number:</b> BC057809	<b>Purification Method:</b> Protein A purification
<b>Size:</b> 100tests, 5 µl/test	<b>GeneID (NCBI):</b> 214	<b>CloneNo.:</b> 3A6
<b>Source:</b> Mouse	<b>Full Name:</b> activated leukocyte cell adhesion molecule	<b>Excitation/Emission maxima wavelengths:</b> 493 nm / 522 nm
<b>Isotype:</b> IgG2a	<b>Calculated MW:</b> 105 kDa	

## Applications

**Tested Applications:**  
FC

**Species Specificity:**  
human

## Background Information

Activated leukocyte cell adhesion molecule (ALCAM, also known as CD166) is a cell adhesion molecule that belongs to the immunoglobulin superfamily. It is involved in cell-cell adhesion through homophilic and heterophilic (to CD6) interactions. ALCAM is widely expressed in a variety of normal tissues and cell types, including activated T cells and monocytes, epithelial cells, fibroblasts, neuronal cells, hepatocytes, and bone marrow mesenchymal stem cells (PMID: 7760007; 25221999). Altered ALCAM expression has been associated with the differentiation state and progression in some neoplasms including melanoma, prostate, colorectal, and breast cancers (PMID: 20461761; 18172759).

## Storage

**Storage:**  
Store at 2-8°C. Avoid exposure to light.  
**Storage Buffer:**  
PBS with 0.09% sodium azide and 0.5% BSA.

For technical support and original validation data for this product please contact:

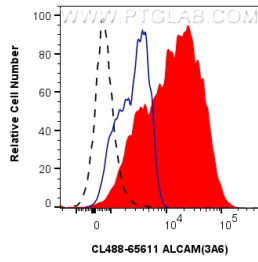
T: 4006900926

E: [Proteintech-CN@ptglab.com](mailto:Proteintech-CN@ptglab.com)

W: [ptgcn.com](http://ptgcn.com)

**This product is exclusively available under Proteintech Group brand and is not available to purchase from any other manufacturer.**

## Selected Validation Data



$1 \times 10^6$  PHA treated (red) or untreated (black) human PBMCs were surface stained with 5  $\mu$ l CoraLite® Plus 488 Anti-Human ALCAM (3A6) Mouse IgG2a Recombinant Antibody (CL488-65611, Clone:3A6), or CoraLite® Plus 488 Mouse IgG2a Isotype Control (C1.18.4) (CL488-65208, Clone: C1.18.4) (blue). Cells were not fixed.