

For Research Use Only

# CoraLite® Plus 488 Anti-Human CD16 (3G8) Mouse IgG2a Recombinant Antibody



Catalog Number: **CL488-65612**

## Basic Information

<b>Catalog Number:</b> CL488-65612	<b>GenBank Accession Number:</b> BC017865	<b>Purification Method:</b> Protein A purification
<b>Size:</b> 100tests, 5 µl/test	<b>GeneID (NCBI):</b> 2214	<b>CloneNo.:</b> 3G8
<b>Source:</b> Mouse	<b>ENSEMBL Gene ID:</b> ENSG00000203747	<b>Excitation/Emission maxima wavelengths:</b> 493 nm / 522 nm
<b>Isotype:</b> IgG2a	<b>Full Name:</b> Fc fragment of IgG, low affinity IIIa, receptor (CD16a)	
	<b>Calculated MW:</b> 254 aa, 29 kDa	

## Applications

**Tested Applications:**  
FC

**Species Specificity:**  
human

## Background Information

CD16 is a 50-70-kDa low affinity Fc receptor found on the surface of natural killer cells, neutrophil polymorphonuclear leukocytes, monocytes and macrophages. CD16 mediates antibody-dependent cellular cytotoxicity (ADCC) and other antibody-dependent responses, such as phagocytosis. CD16 has been identified as Fc receptors Fc $\gamma$ RIIIa (CD16a) and Fc $\gamma$ RIIIb (CD16b), encoded by two nearly identical genes, FCGR3A and the FCGR3B. Clone 3G8 recognizes both the CD16a and CD16b (PMID: 7592758).

## Storage

**Storage:**  
Store at 2-8°C. Avoid exposure to light.

**Storage Buffer:**  
PBS with 0.09% sodium azide and 0.5% BSA.

For technical support and original validation data for this product please contact:

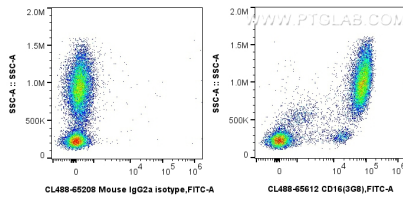
T: 4006900926

E: [Proteintech-CN@ptglab.com](mailto:Proteintech-CN@ptglab.com)

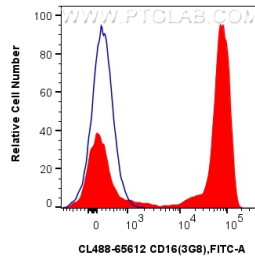
W: [ptgcn.com](http://ptgcn.com)

**This product is exclusively available under Proteintech Group brand and is not available to purchase from any other manufacturer.**

## Selected Validation Data



$1 \times 10^6$  human peripheral blood leukocytes were surface stained with 5  $\mu$ l CoraLite® Plus 488 Anti-Human CD16 Mouse IgG2a Recombinant Antibody (CL488-65612, Clone: 3G8), or CoraLite® Plus 488 Mouse IgG2a Isotype Control (CL488-65208, Clone: C1.18.4). Cells were incubated with FC Receptor Block prior to staining. Cells were not fixed.



$1 \times 10^6$  human peripheral blood leukocytes were surface stained with 5  $\mu$ l CoraLite® Plus 488 Anti-Human CD16 Mouse IgG2a Recombinant Antibody (CL488-65612, Clone: 3G8) (red), or CoraLite® Plus 488 Mouse IgG2a Isotype Control (CL488-65208, Clone: C1.18.4) (blue). Cells were incubated with FC Receptor Block prior to staining. Cells were not fixed.