

For Research Use Only

# CoraLite® Plus 488-conjugated NTF2 Monoclonal antibody



Catalog Number: CL488-66063

## Basic Information

<b>Catalog Number:</b> CL488-66063	<b>GenBank Accession Number:</b> BC002348	<b>Purification Method:</b> Protein G purification
<b>Size:</b> 1000 µg/ml	<b>GeneID (NCBI):</b> 10204	<b>CloneNo.:</b> 4H7F9
<b>Source:</b> Mouse	<b>UNIPROT ID:</b> P61970	<b>Recommended Dilutions:</b> IF/ICC 1:50-1:500
<b>Isotype:</b> IgG1	<b>Full Name:</b> nuclear transport factor 2	<b>Excitation/Emission maxima wavelengths:</b> 493 nm / 522 nm
<b>Immunogen Catalog Number:</b> AG7879	<b>Calculated MW:</b> 14 kDa	
	<b>Observed MW:</b> 13 kDa	

## Applications

<b>Tested Applications:</b> IF/ICC	<b>Positive Controls:</b> IF/ICC : HeLa cells,
<b>Species Specificity:</b> human	

## Background Information

NUTF2 (nuclear transport factor 2), also named as NTF2, is a cytosolic protein responsible for nuclear import of Ran, a small Ras-like GTPase involved in a number of critical cellular processes, including cell cycle regulation, chromatin organization during mitosis, reformation of the nuclear envelope following mitosis, and controlling the directionality of nucleocytoplasmic transport. Nucleocytoplasmic translocation of NTF2 is regulated in mammalian cells, and may involve a tyrosine and/or threonine kinase-dependent signal transduction mechanism(s) (PMID: 22880006). The MW of this protein is 14 kDa, and this antibody specially recognises the 14 kDa protein.

## Storage

**Storage:**  
Store at -20°C. Avoid exposure to light. Stable for one year after shipment.  
**Storage Buffer:**  
PBS with 50% Glycerol, 0.05% Proclin300, 0.5% BSA, pH 7.3.  
Aliquoting is unnecessary for -20°C storage

For technical support and original validation data for this product please contact:

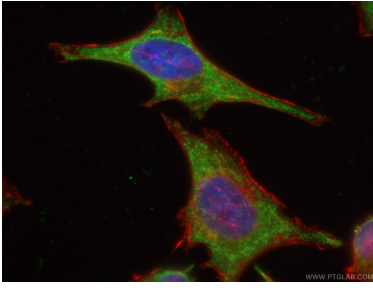
T: 4006900926

E: [Proteintech-CN@ptglab.com](mailto:Proteintech-CN@ptglab.com)

W: [ptgcn.com](http://ptgcn.com)

This product is exclusively available under Proteintech Group brand and is not available to purchase from any other manufacturer.

## Selected Validation Data



Immunofluorescent analysis of (-20°C Ethanol) fixed HeLa cells using CoraLite® Plus 488-conjugated NTF2 antibody (CL488-66063, Clone: 4H7F9 ) at dilution of 1:200, CL594-Phalloidin (red).