

For Research Use Only

# CoraLite® Plus 488-conjugated NCALD Monoclonal antibody



Catalog Number: **CL488-66088**

## Basic Information

<b>Catalog Number:</b> CL488-66088	<b>GenBank Accession Number:</b> BC036098	<b>Purification Method:</b> Protein A purification
<b>Size:</b> 1000 µg/ml	<b>GeneID (NCBI):</b> 83988	<b>CloneNo.:</b> 6B4E10
<b>Source:</b> Mouse	<b>UNIPROT ID:</b> P61601	<b>Recommended Dilutions:</b> IF 1:50-1:500
<b>Isotype:</b> IgG2a	<b>Full Name:</b> neurocalcin delta	<b>Excitation/Emission maxima wavelengths:</b> 493 nm / 522 nm
<b>Immunogen Catalog Number:</b> AG18760	<b>Calculated MW:</b> 193 aa, 22 kDa	

## Applications

<b>Tested Applications:</b> IF/ICC	<b>Positive Controls:</b> IF : HeLa cells,
<b>Species Specificity:</b> human, mouse, pig	

## Background Information

NCALD (Neurocalcin-delta) is a member of the EF-hand calcium-binding protein superfamily. It may be involved in the calcium-dependent regulation of rhodopsin phosphorylation. It is a high-affinity Ca<sup>2+</sup> sensor (K<sub>d</sub> of approx. 0.6 µM), which is most abundantly expressed in the Purkinje cells of the cerebellum (PMID:11964161). This antibody is specific to NCALD.

## Storage

**Storage:**  
Store at -20°C. Avoid exposure to light.  
**Storage Buffer:**  
PBS with 50% Glycerol, 0.05% Proclin300, 0.5% BSA, pH 7.3.  
**Aliquoting is unnecessary for -20°C storage**

For technical support and original validation data for this product please contact:

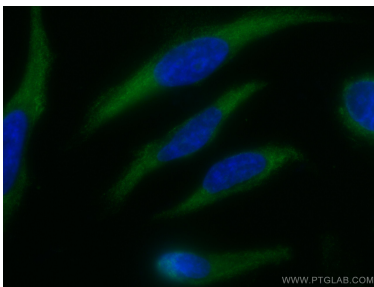
T: 4006900926

E: [Proteintech-CN@ptglab.com](mailto:Proteintech-CN@ptglab.com)

W: [ptgcn.com](http://ptgcn.com)

**This product is exclusively available under Proteintech Group brand and is not available to purchase from any other manufacturer.**

## Selected Validation Data



Immunofluorescent analysis of (-20°C Methanol) fixed HeLa cells using CoraLite® Plus 488 NCALD antibody (CL488-66088, Clone: 6B4E10) at dilution of 1:100.