

For Research Use Only

# CoraLite® Plus 488-conjugated Melanophilin Monoclonal antibody



Catalog Number: CL488-66092

## Basic Information

<b>Catalog Number:</b> CL488-66092	<b>GenBank Accession Number:</b> BC001653	<b>Purification Method:</b> Protein G purification
<b>Size:</b> 861 µg/ml	<b>GeneID (NCBI):</b> 79083	<b>CloneNo.:</b> 1A8D12
<b>Source:</b> Mouse	<b>UNIPROT ID:</b> Q9BV36	<b>Recommended Dilutions:</b> IF 1:50-1:500
<b>Isotype:</b> IgG1	<b>Full Name:</b> melanophilin	<b>Excitation/Emission maxima wavelengths:</b> 493 nm / 522 nm
<b>Immunogen Catalog Number:</b> AG19286	<b>Calculated MW:</b> 66 kDa	
	<b>Observed MW:</b> 66 kDa	

## Applications

<b>Tested Applications:</b> IF/ICC	<b>Positive Controls:</b> IF : HepG2 cells,
<b>Species Specificity:</b> human, pig	

## Background Information

Melanophilin (MLPH) is a member of the exophilin subfamily of Rab effector proteins. MLPH is a modular protein, forming a ternary complex with the small Ras-related GTPase Rab27A in its GTP-bound form and the motor protein myosin Va. It regulates retention of melanosomes at the peripheral actin cytoskeleton of melanocytes, a process essential for normal mammalian pigmentation. Defects in MLPH are a cause of Griscelli syndrome type 3 (GS3), which is characterized by a silver-gray hair color and abnormal pigment distribution in the hair shaft.

## Storage

**Storage:**  
Store at -20°C. Avoid exposure to light. Stable for one year after shipment.  
**Storage Buffer:**  
PBS with 50% Glycerol, 0.05% Proclin300, 0.5% BSA, pH 7.3.  
Aliquoting is unnecessary for -20°C storage

For technical support and original validation data for this product please contact:

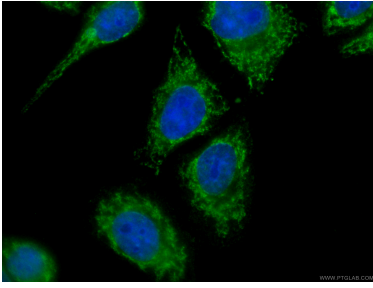
T: 4006900926

E: [Proteintech-CN@ptglab.com](mailto:Proteintech-CN@ptglab.com)

W: [ptgcn.com](http://ptgcn.com)

**This product is exclusively available under Proteintech Group brand and is not available to purchase from any other manufacturer.**

## Selected Validation Data



Immunofluorescent analysis of (-20°C Ethanol) fixed HepG2 cells using CL488-66092 (Melanophilin antibody) at dilution of 1:100.