

For Research Use Only

# CoraLite® Plus 488-conjugated PDH E1 Alpha Monoclonal antibody



Catalog Number: CL488-66119

Featured Product

## Basic Information

Catalog Number:

CL488-66119

Size:

1000 µg/ml

Source:

Mouse

Isotype:

IgG2a

Immunogen Catalog Number:

AG12556

GenBank Accession Number:

BC002406

GeneID (NCBI):

5160

UNIPROT ID:

P08559

Full Name:

pyruvate dehydrogenase (lipoamide)

alpha 1

Calculated MW:

43 kDa

Observed MW:

43 kDa

Purification Method:

Protein A purification

CloneNo.:

2B3C10

Recommended Dilutions:

WB 1:500-1:2000

Excitation/Emission maxima

wavelengths:

493 nm / 522 nm

## Applications

Tested Applications:

WB

Species Specificity:

human

Positive Controls:

WB : HepG2 cells, HEK-293 cells

## Background Information

PDHA1(Pyruvate dehydrogenase E1 component subunit alpha, somatic form, mitochondrial) is also named as PHE1A.It is one of the 3 enzymes of the pyruvate dehydrogenase complex which is a nuclear-encoded mitochondrial matrix multienzyme complex that provides the primary link between glycolysis and the tricarboxylic acid (TCA) cycle by catalyzing the irreversible conversion of pyruvate into acetyl-CoA(PMID:7853374).It has 4 isoforms produced by alternative splicing.Defects in PDHA1 are a cause of pyruvate dehydrogenase E1-alpha deficiency (PDHAD) and X-linked Leigh syndrome (X-LS).

## Storage

Storage:

Store at -20°C. Avoid exposure to light. Stable for one year after shipment.

Storage Buffer:

PBS with 50% Glycerol, 0.05% Proclin300, 0.5% BSA, pH 7.3.

Aliquoting is unnecessary for -20°C storage

For technical support and original validation data for this product please contact:

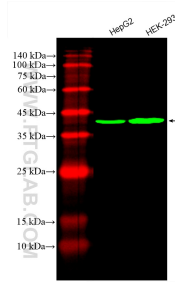
T: 4006900926

E: Proteintech-CN@ptglab.com

W: ptgcn.com

This product is exclusively available under Proteintech Group brand and is not available to purchase from any other manufacturer.

## Selected Validation Data



Various lysates were subjected to SDS PAGE followed by western blot with CL488-66119 (PDH E1 Alpha antibody) at dilution of 1:1000 incubated at room temperature for 1.5 hours.