

For Research Use Only

CoraLite® Plus 488-conjugated RBPJ Monoclonal antibody



Catalog Number: CL488-66132

Featured Product

Basic Information

Catalog Number:

CL488-66132

Size:

1000 µg/ml

Source:

Mouse

Isotype:

IgG1

Immunogen Catalog Number:

AG6302

GenBank Accession Number:

BC064976

GeneID (NCBI):

3516

UNIPROT ID:

Q06330

Full Name:

recombination signal binding protein
for immunoglobulin kappa J region

Calculated MW:

56 kDa

Observed MW:

60 kDa

Purification Method:

Protein G purification

CloneNo.:

2F12G12

Excitation/Emission maxima
wavelengths:

493 nm / 522 nm

Applications

Tested Applications:

FC (Intra)

Species Specificity:

human

Background Information

Storage

Storage:

Store at -20°C. Avoid exposure to light. Stable for one year after shipment.

Storage Buffer:

PBS with 50% Glycerol, 0.05% Proclin300, 0.5% BSA, pH 7.3.

Aliquoting is unnecessary for -20°C storage

For technical support and original validation data for this product please contact:

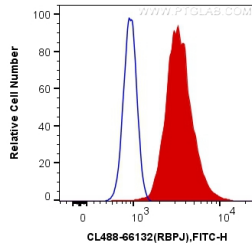
T: 4006900926

E: Proteintech-CN@ptglab.com

W: ptgcn.com

This product is exclusively available under Proteintech Group brand and is not available to purchase from any other manufacturer.

Selected Validation Data



1X10⁶ HeLa cells were intracellularly stained with 0.4 ug CoraLite® Plus 488 Anti-Human RBPJ (CL488-66132, Clone:2F12G12) (red), or 0.4 ug Control Antibody. Cells were fixed and permeabilized with Transcription Factor Staining Buffer Kit (PF00011).