

For Research Use Only

CoraLite® Plus 488-conjugated C4 Gamma Chain Monoclonal antibody

Catalog Number:CL488-66242



Basic Information

Catalog Number: CL488-66242	GenBank Accession Number: BC012372	Purification Method: Protein G purification
Size: 1000 µg/ml	GeneID (NCBI): 720	CloneNo.: 2G6A7
Source: Mouse	UNIPROT ID: POCOL4	Recommended Dilutions: IF-P 1:50-1:500
Isotype: IgG1	Full Name: complement component 4A (Rodgers blood group)	Excitation/Emission maxima wavelengths: 493 nm / 522 nm
Immunogen Catalog Number: AG10449	Calculated MW: 1744 aa, 193 kDa	
	Observed MW: 31 kDa	

Applications

Tested Applications: IF-P	Positive Controls: IF-P: mouse liver tissue,
Species Specificity: human	

Background Information

Complement C4, a component of the classical complement pathway, has an important role in innate immune function. C4 protein is expressed as a single chain precursor which is proteolytically cleaved into a trimer of alpha, beta, and gamma chains (molecular weights 95, 78, and 31 kDa) prior to secretion. The alpha chain is cleaved to release C4 anaphylatoxin, an antimicrobial peptide and a mediator of local inflammation. This antibody raised against 1543-1744aa of human C4-A protein recognizes C4 gamma chain.

Storage

Storage:
Store at -20°C. Avoid exposure to light. Stable for one year after shipment.
Storage Buffer:
PBS with 50% Glycerol, 0.05% Proclin300, 0.5% BSA, pH 7.3.
Aliquoting is unnecessary for -20°C storage

For technical support and original validation data for this product please contact:

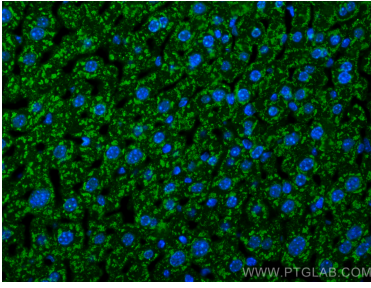
T: 4006900926

E: Proteintech-CN@ptglab.com

W: ptgcn.com

This product is exclusively available under Proteintech Group brand and is not available to purchase from any other manufacturer.

Selected Validation Data



Immunofluorescent analysis of (4% PFA) fixed paraffin-embedded mouse liver tissue using CoraLite® Plus 488 C4 Gamma Chain antibody (CL488-66242, Clone: 2G6A7) at dilution of 1:200. Heat mediated antigen retrieval with Tris-EDTA buffer (pH 9.0).