

For Research Use Only

CoraLite® Plus 488-conjugated CRP Monoclonal antibody



Catalog Number:CL488-66250

Basic Information

Catalog Number: CL488-66250	GenBank Accession Number: BC020766	Purification Method: Protein A purification
Size: 1000 µg/ml	GeneID (NCBI): 1401	CloneNo.: 3F10A11
Source: Mouse	UNIPROT ID: P02741	Recommended Dilutions: IF 1:50-1:500
Isotype: IgG2a	Full Name: C-reactive protein, pentraxin-related	Excitation/Emission maxima wavelengths: 493 nm / 522 nm
Immunogen Catalog Number: AG9883	Calculated MW: 224 aa, 25 kDa	
	Observed MW: 27 kDa	

Applications

Tested Applications: IF/ICC	Positive Controls: IF : human liver tissue,
Species Specificity: human, mouse, rat, pig	

Background Information

C-reactive protein (CRP) is an acute-phase serum protein synthesized by the liver in response to interleukin-6 (IL-6) during inflammation. The name of CRP derives from its ability to react with the C polysaccharide of *Streptococcus pneumoniae*. CRP is an annular, pentameric protein that belongs to the pentraxin family of proteins. CRP displays several functions associated with host defense: it promotes agglutination, bacterial capsular swelling, phagocytosis and complement fixation through its calcium-dependent binding to phosphorylcholine. It is used mainly as a marker of inflammation.

Storage

Storage:
Store at -20°C. Avoid exposure to light. Stable for one year after shipment.
Storage Buffer:
PBS with 50% Glycerol, 0.05% Proclin300, 0.5% BSA, pH 7.3.
Aliquoting is unnecessary for -20°C storage

For technical support and original validation data for this product please contact:

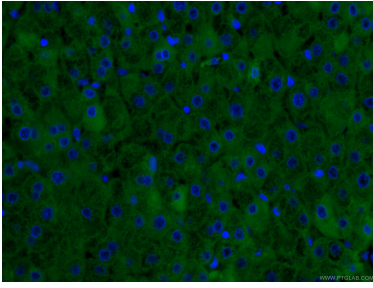
T: 4006900926

E: Proteintech-CN@ptglab.com

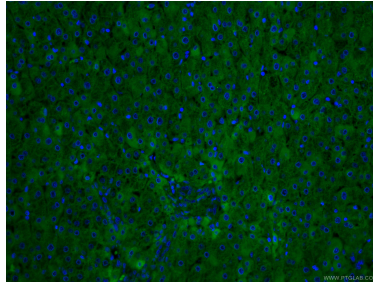
W: ptgcn.com

This product is exclusively available under Proteintech Group brand and is not available to purchase from any other manufacturer.

Selected Validation Data



Immunofluorescent analysis of (4% PFA) fixed human liver tissue using CL488-66250 (CRP antibody) at dilution of 1:100.



Immunofluorescent analysis of (4% PFA) fixed human liver tissue using CL488-66250 (CRP antibody) at dilution of 1:100.