

For Research Use Only

CoraLite® Plus 488-conjugated Cardiac Troponin I Monoclonal antibody



Catalog Number: **CL488-66376**

Basic Information

Catalog Number: CL488-66376	GenBank Accession Number: BC096165	Purification Method: Protein G purification
Size: 1000 µg/ml	GeneID (NCBI): 7137	CloneNo.: 1D5D6
Source: Mouse	UNIPROT ID: P19429	Recommended Dilutions: IF 1:50-1:500
Isotype: IgG1	Full Name: troponin I type 3 (cardiac)	Excitation/Emission maxima wavelengths: 493 nm / 522 nm
Immunogen Catalog Number: AG16758	Calculated MW: 210 aa, 24 kDa	
	Observed MW: 26-28 kDa	

Applications

Tested Applications:
IF-P

Species Specificity:
human, mouse, rat

Positive Controls:

IF : mouse heart tissue,

Background Information

Troponin I (TnI) is the inhibitory subunit of troponin, the structural protein involved in the regulation of striated muscle contraction. Cardiac Troponin I (cTnI) is produced by cardiac muscle. Two other TnI isoforms (slow sTnI and fast sTnI) are produced by slow-twitch and fast-twitch skeletal muscles, respectively. cTnI has been considered as one of the most specific and sensitive markers of myocardial damage like acute myocardial infarction (AMI) for decades. Detection of cTnI in serum is widely accepted as a diagnostic tool in acute coronary syndromes. This antibody is specific to cTnI, but not cross-react with skeletal TnI.

Storage

Storage:

Store at -20°C. Avoid exposure to light. Stable for one year after shipment.

Storage Buffer:

PBS with 50% Glycerol, 0.05% Proclin300, 0.5% BSA, pH 7.3.

Aliquoting is unnecessary for -20°C storage

For technical support and original validation data for this product please contact:

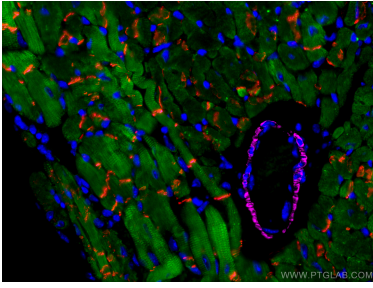
T: 4006900926

E: Proteintech-CN@ptglab.com

W: ptgcn.com

This product is exclusively available under Proteintech Group brand and is not available to purchase from any other manufacturer.

Selected Validation Data



Immunofluorescent analysis of (4% PFA) fixed mouse heart tissue using CoraLite® Plus 488 Cardiac Troponin I antibody (CL488-66376, Clone: 1D5D6) at dilution of 1:200, CoraLite® Plus 647 smooth muscle actin specific antibody (CL647-67735, Clone: 1E9A11, magenta), CoraLite®594 N-cadherin antibody (CL594-22018, red). DAPI (blue).