

For Research Use Only

CoraLite® Plus 488-conjugated Beta Catenin Monoclonal antibody



Catalog Number: CL488-66379

Basic Information

Catalog Number: CL488-66379	GenBank Accession Number: NM_001904	Purification Method: Protein G purification
Size: 1000 µg/ml	GeneID (NCBI): 1499	CloneNo.: 1B8A1
Source: Mouse	ENSEMBL Gene ID: ENSG00000168036	Recommended Dilutions: IF 1:50-1:500
Isotype: IgG1	UNIPROT ID: P35222	Excitation/Emission maxima wavelengths: 493 nm / 522 nm
	Full Name: catenin (cadherin-associated protein), beta 1, 88kDa	
	Calculated MW: 781 aa, 86 kDa	

Applications

Tested Applications: FC (Intra), IF/ICC	Positive Controls: IF : MCF-7 cells,
Species Specificity: human, mouse, rat, pig	

Background Information

β-Catenin, also known as CTNNB1, is an evolutionarily conserved, multifunctional intracellular protein. β-Catenin was originally identified in cell adherens junctions (AJs) where it functions to bridge the cytoplasmic domain of cadherins to α-catenin and the actin cytoskeleton. Besides its essential role in the AJs, β-catenin is also a key downstream component of the canonical Wnt pathway that plays diverse and critical roles in embryonic development and adult tissue homeostasis. The Wnt/β-catenin pathway is also involved in the activation of other intracellular messengers such as calcium fluxes, JNK, and SRC kinases. Deregulation of β-catenin activity is associated with multiple diseases including cancers. (PMID: 22617422; 18334222) This antibody is conjugated with CL488(Ex/Em 488 nm/515 nm).

Storage

Storage:
Store at -20°C. Avoid exposure to light. Stable for one year after shipment.
Storage Buffer:
PBS with 50% Glycerol, 0.05% Proclin300, 0.5% BSA, pH 7.3.
Aliquoting is unnecessary for -20°C storage

For technical support and original validation data for this product please contact:

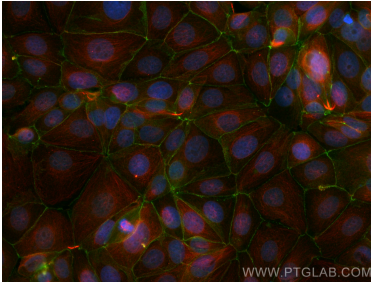
T: 4006900926

E: Proteintech-CN@ptglab.com

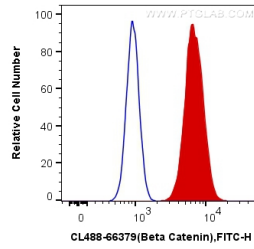
W: ptgcn.com

This product is exclusively available under Proteintech Group brand and is not available to purchase from any other manufacturer.

Selected Validation Data



Immunofluorescent analysis of (4% PFA) fixed MCF-7 cells using CoraLite® Plus 488 Beta Catenin antibody (CL488-66379, Clone: 1B8A1) at dilution of 1:200, Alpha Tubulin antibody (11224-1-AP, red).



1X10⁶ MCF-7 cells were intracellularly stained with 0.4 ug CoraLite® Plus 488 Anti-Human Beta Catenin (CL488-66379, Clone:1B8A1) (red), or 0.4 ug Mouse IgG1 Isotype Control (CL488-66360, Clone: T1F8D3F10) (blue). Cells were fixed with 4% PFA and permeabilized with Flow Cytometry Perm Buffer (PF00011-C).