

For Research Use Only

CoraLite® Plus 488-conjugated ATF6 Monoclonal antibody



Catalog Number:CL488-66563

Basic Information

Catalog Number: CL488-66563	GenBank Accession Number: BC014969	Purification Method: Protein G purification
Size: 1000 µg/ml	GeneID (NCBI): 22926	CloneNo.: 3B7E4
Source: Mouse	UNIPROT ID: P18850	Recommended Dilutions: IF 1:50-1:500
Isotype: IgG1	Full Name: activating transcription factor 6	Excitation/Emission maxima wavelengths: 493 nm / 522 nm
Immunogen Catalog Number: AG21456	Calculated MW: 75 kDa	
	Observed MW: 90-100 kDa	

Applications

Tested Applications: IF/ICC	Positive Controls: IF : HepG2 cells,
Species Specificity: Human, mouse, rat	

Background Information

Activating transcription factor 6 (ATF6) is a transcription factor that acts during endoplasmic reticulum stress by activating unfolded protein response target genes. Binds DNA on the 5'-CCAC[GA]-3' half of the ER stress response element (ERSE) (5'-CCAAT-N(9)-CCAC[GA]-3') and of ERSE II (5'-ATTGG-N-CCACG-3'). Binding to ERSE requires binding of NF-Y to ERSE. Could also be involved in activation of transcription by the serum response factor. During unfolded protein response an approximative 50 kDa fragment containing the cytoplasmic transcription factor domain is released by proteolysis. The cleavage seems to be performed sequentially by site-1 and site-2 proteases. The fully glycosylated form of ATF6, a 670 amino acid protein, exhibits an electrophoretic mobility of ~90 kDa in denaturing SDS-gels, in part because of the glycosylated modifications. ATF6 has 3 consensus sites for N-linked glycosylation and exists constitutively as a glycosylated protein. Differentially glycosylated ATF6 forms may result from mutations or experimental treatment (PMID:15804611) (PMID:14699159). The antibody recognizes cleaved and fully glycosylated forms of ATF6.

Storage

Storage:
Store at -20°C. Avoid exposure to light.
Storage Buffer:
PBS with 50% Glycerol, 0.05% Proclin300, 0.5% BSA, pH 7.3.
Aliquoting is unnecessary for -20°C storage

For technical support and original validation data for this product please contact:

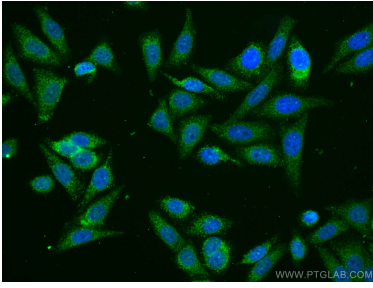
T: 4006900926

E: Proteintech-CN@ptglab.com

W: ptgcn.com

This product is exclusively available under Proteintech Group brand and is not available to purchase from any other manufacturer.

Selected Validation Data



Immunofluorescent analysis of (4% PFA) fixed HepG2 cells using CoraLite® Plus 488 ATF6 antibody (CL488-66563, Clone: 3B7E4) at dilution of 1:100.